

Neighbours

A part of the community for more than 40 years • FEBRUARY 2007

OPG is business of the year Chamber of Commerce hosts Community Achievement Awards banquet

Ontario Power Generation (OPG) has been named the 2007 winner of the Sobeys Business of the Year Award by the Kincardine & District Chamber of Commerce. The Sobeys Business of the Year Award is given to "a business that exhibits excellence in business growth, customer service and community leadership." It is one of several Community Achievement Awards given out annually by the Chamber of Commerce to recognize specific contributions to business, volunteerism and citizenship, environmental stewardship, quality of life and agriculture.

Susan Novak, executive director of the Chamber of Commerce who nominated OPG for the award, noted the company's long-standing role in the community.

"OPG is a model corporate citizen who has been a part of this community for over 40 years," she said. "OPG conducts its business to high standards set by the Canadian

Nuclear Safety Commission (CNSC), maintains a highly visible presence in the community through its communications and operates an extensive sponsorship program that benefits numerous small as well as larger groups and events in our community and those which surround us."

Terry Squire, Director of Public Affairs for OPG's Nuclear Waste Management Division (NWMD), was pleased to hear of the community achievement award. "We have always considered ourselves to be part of the community and as such, we have accepted the responsibility that goes with that role," he said. "Every OPG employee has contributed to this honour and we will all cherish it."

Squire and Keith Mombourquette, Director of Nuclear Waste Operations, will accept the award on behalf of OPG at the awards banquet to be held at the Governor's Inn on March 2 in Kincardine.

Betty Lamont wins OPG Environmental Award

Betty Lamont of Inverhuron is the 2007 recipient of the Ontario Power Generation (OPG) Award for the Environment. The award is one of nine Community Achievement Awards given out by the Kincardine and District Chamber of Commerce to recognize a number of contributions in business, the environment, volunteerism and quality of life.

Betty is an executive member of Kincardine Communities In Bloom and has contributed substantially to the organization, both locally and provincially, which promotes beautification, urban forestry, community involvement, heritage conservation, and environmental awareness within the community.

Honoured to achieve the award, Betty said she intends to use it to promote the environmental aspects of Communities in Bloom.

"I really want to stress the environmental aspects of this program because that really is the direction that we are going in," Betty said, noting that the time for creating environmental awareness about conservation and preservation with the public is now.

A master gardener, Betty is also interested in coastal conservation and she conducts her own experiments within her garden that reflects this interest.



Phase one of the geoscientific site characterization activities for the Deep Geologic Repository have begun at the Bruce site. Drilling and coring of the first bore hole, which will go down to 450 metres is currently underway. The silt shaker removes particles from drilling fluid used in the process.

From me to you - PROVIDING A CONTEXT FOR OUR 2006 REPORT CARD



Keith Mombourquette
Director of Nuclear Waste Operations

Each year at this time we publish a graphical representation of the performance of the Western Waste Management Facility (WWMF) during the previous year. We publish this information because we believe that it is important to keep the residents of our host communities informed about how we are doing on a regular basis.

Our staff have been managing low, intermediate and high level nuclear waste on this site for over 40 years now, in a manner which is safe, environmentally responsible and in keeping with the stringent requirements of the CNSC.

Our performance is summarized here through six indicators - worker safety, regard for the environment, adherence to CNSC regulations, meeting regulatory limits for the release of emissions, waste storage capability and the safe transport of radioactive materials. These are all performance areas where we hold ourselves to high standards. Our operation was better than target in five of these six areas during 2006. This performance is a testimony to the facilities and processes that are in place and our community of workers who are committed to taking the time to do things right the first time – an attitude which is also embraced by contractors working on our site who have also achieved high standards of safety and performance.

Although the WWMF has achieved an excellent safety record for more than a decade, an unfortunate accident just before Christmas – a fall on the ice – resulted in an injury severe enough to require surgery, which is reflected in this year’s slightly lower rating

for worker safety. This was the first lost time accident that we have experienced in over 11 years. This accident, involving one of our Truck Drivers, occurred off-site under difficult winter conditions. Our susceptibility to such an incident gives food for thought to everyone about the winter hazards one may encounter when dealing with the elements.

As we look forward into the challenges of 2007, we are committed to building on the successful operations of our past, and we want to reconfirm our commitment to being good stewards in the operation of our facilities. In this way, we hope that we will continue to enjoy the backing of our neighbours whose support and wide spread acceptance of our role as part of the community has contributed greatly to our levels of achievement. We continue to embrace opportunities for two-way communication with our communities and look forward to maintaining a visible presence.

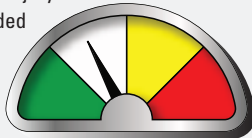
Western Waste Management Facility 2006 year end report

WORKER SAFETY

• **On target**

This indicator is a composite performance summary of employee safety measures including: Accident Severity Rate, All Injury Rate and Temporary Total Disability Rate. Also included is a worker radiological dose measurement.

The WWMF has an excellent employee safety record. The WWMF reported its first lost time accident in over 11 years this winter.

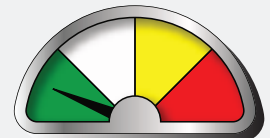


MEETING REGULATORY LIMITS FOR THE RELEASE OF EMISSIONS

• **Better than target**

This indicator measures radiological emissions to air and water from the WWMF.

No emission targets were exceeded last year.

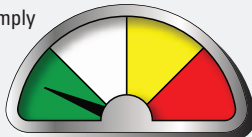


REGARD FOR THE ENVIRONMENT

• **Better than target**

This indicator measures overall environmental performance including spills to the environment and any failures to comply with environmental regulations.

There were no spills to the environment in 2006.

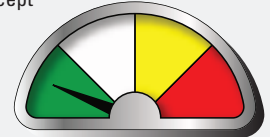


WASTE STORAGE CAPABILITY

• **Better than target**

This measure indicates the readiness of the WWMF to accept low and intermediate level waste from the nuclear stations at Pickering, Darlington and Bruce. It also indicates the readiness to accept nuclear fuel waste from Bruce Power.

In 2006 the facility was ready with required storage space available to accept low, intermediate and high level waste.

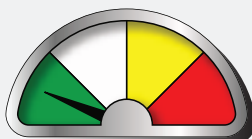


ADHERENCE TO CNSC REGULATIONS

• **Better than target**

This measure is used to gauge our performance in complying with CNSC regulatory commitments.

One hundred percent of CNSC commitments were met and there were no Operating Policy and Procedure violations.

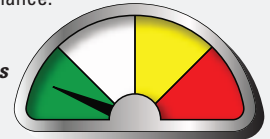


SAFE TRANSPORT OF RADIOACTIVE MATERIALS

• **Better than target**

This is a composite measure of radioactive material transportation safety. It includes transportation accidents, violations of transportation regulations and transportation package maintenance compliance.

OPG has an exceptional safety record in the transportation of radioactive materials. OPG has never had a radioactive release while transporting radioactive material.



Colour indicators: Above target On target Slightly below target Below target



Brian Wakelin, chairman of the Saugeen Memorial Hospital Foundation and Ann Webrstein, program director for the Southampton site of Grey Bruce Health Services, accept a donation of \$5,000 from OPG employees Lynne McKinnon and Cathy Clazie.

OPG supports local efforts to enhance health care

Ontario Power Generation (OPG) recently donated \$5,000 to the Saugeen Memorial Healthcare Foundation to assist with the upgrading of a paging system for the Southampton Hospital.

"We are implementing an in-house paging system that will link all of our sites within the Grey Bruce Health Services (GBHS)," Jamie Page, GBHS Network Administrator, said. "What this means is that a GBHS pager can receive a page anywhere within our sites and to a certain degree, from outside of the facilities. With this new system, we can also integrate with blackberries, cell phones and any text messaging device."

The new system will give staff the flexibility of paging a cell phone or blackberry anywhere in North America with cellular signal access.

Included in the upgrade is the future purchase of six companion phones for nurses at the Southampton site.

Kevin Orr, senior communications advisor with OPG who oversees the corporate citizenship program at the Western Waste

Management Facility (WWMF) at the Bruce site, noted that health care is an obvious area for corporate support.

"OPG has a long history of supporting health care in the community. Many will remember when we donated locum houses to Saugeen Shores and the Municipality of Kincardine several years ago to help with doctor recruitment and retainment. We've made various financial donations over the years and our employees at the WWMF, quite apart from the corporate donations, hold an annual golf tournament each summer and the profits are split between the Southampton and Kincardine hospitals."

OPG is also represented on a physician recruitment and retention committee within the Municipality of Kincardine, which is comprised of area politicians from both Kincardine and Huron-Kinloss as well as community-minded citizens and the Physician Recruitment & Retention Co-ordinator Lynn Bos.

OPG recognizes that health care is one of the community's life lines and as part of the community, the company will continue to make commitments in this area.

CNSC staff recommends renewal of licence

Canadian Nuclear Safety Commission staff (CNSC), at a public hearing in Ottawa on Jan. 24, recommended that commissioners approve Ontario Power Generation's (OPG) request for a 10-year operating licence for its Western Waste Management Facility (WWMF) at the Bruce site.

CNSC staff also recommended approval of OPG's plans to build up to 128 in-ground storage containers for intermediate level nuclear waste and up to nine above ground storage buildings, as

required, at Day One of the hearing.

The first day of the two-day public hearing consisted of presentations from OPG and CNSC staff who presented an overview of all aspects of OPG's performance in terms of operations as well as the programs in place to secure responsible environmental stewardship and safe working practices on behalf of staff, the community and the environment.

Ken Nash, Senior Vice President of Nuclear Waste, and Keith Mombourquette,

Director of Nuclear Waste Operations, led OPG's presentation at the hearing.

"CNSC staff said that OPG staff members are knowledgeable and motivated, and have maintained good overall standards in all work areas," Nash commented after the hearing.

A decision on the renewal of the licence is expected before May 31, 2007, following Day 2 of the Hearing for members of the public, scheduled for April 11, 2007.



OPG financially supported a Hockey Day on the Bruce held recently in Lion's Head where each minor hockey team had a chance to show their stuff before a capacity hometown crowd.

Lion's Head loves hockey

Nelson, B.C. may have been the chosen site for this year's CBC Hockey Day in Canada on Jan. 13, but a community of 500 people near the top of the Bruce Peninsula embraced their own hockey heritage and culture with the Second Annual Hockey Day on the Bruce held in Lion's Head.

Serge Marcella, a training officer at Ontario Power Generation's (OPG) Western Waste Management Facility (WWMF) and minor hockey liaison for the Hockey Day on the Bruce, said the day-long event has become an annual mini carnival that draws the entire community."

"We had about 1500 here this year," he said, noting the huge support the event receives from the surrounding communities in Northern Bruce Peninsula.

Although the national event hosted by Ron McLean with his bombastic, but likeable sidekick Don Cherry consists of a 13.5 hour broadcast highlighting a NHL all-Canadian triple-header, the Lions Head event consisted of the presentation of 13 hockey games over a 16-hour time period. Every minor hockey team from tyke to midget - boys and girls - have their hockey game of fame where they are showcased before a packed arena audience of friends, families and community members.

"These kids skate out onto the ice and for them it's just like being at the Air Canada Centre," Serge said. "The arena is just packed and it's such a thrill for them to see the stands full of people.

The event culminated with games between some of the old-timer teams.

"The kids get to see their fathers and in some cases, grandfathers play," Serge said.

In addition, the Canadian Moose Men's and Women's tournament teams both attended this year's festivities to provide some entertaining hockey for the local fans. These teams travel worldwide to promote fundraising initiatives through hockey. While in Lion's Head, the men's team played the Panthers (Old-timers) and the women's team took on the girls' midget team.

A silent auction, raffles and the sale of food and beverages rounded out the event, which raised about \$10,000 this year. Proceeds are split between arena improvements and minor hockey. OPG's financial support of this event covered some of the ice rental costs and enabled more money to go back into the community.

With two successful events to their credit, organizers will continue to host their own brand of CBC's Hockey day in Canada. And having applied twice now to actually have the famed event in their little town on the peninsula, Lion's Head will continue to apply for the honour of having the celebrities come to their hockey neck of the woods. But in the interim, the pros have nothing on the Bruce community when it comes to both enthusiasm and pride in one's hockey roots.

CNSC recommends panel hearing for DGR

Following a Canadian Nuclear Safety Commission (CNSC) public hearing, on the Scoping Document for Ontario Power Generation's proposed Deep Geologic Repository (DGR), in the Municipality of Kincardine on October 23, 2006, the CNSC announced its decision on December 21, 2006 to recommend to the federal Minister of Environment that the project be referred to a review panel. The Minister of the Environment will now decide on the environmental assessment (EA) track for the long-term storage facility for low and intermediate level nuclear waste.

A review panel, a group of experts appointed by the Minister of the Environment, informs and involves large numbers of interested groups and members of the public in the EA process by allowing individuals to present evidence, concerns and recommendations at public hearings. They also provide opportunities for the public to hear the view of government experts about the project.

OPG looks forward to the decision by Minister John Baird.

Neighbours

WWMF is published for the neighbours of Ontario Power Generation's Western Waste Management Facility.

Editor:
Marie Wilson
Phone: (519) 361-4065
email marie.wilson@opg.com

Mailing Address:
Ontario Power Generation
P.O. Box 7000 B23
Tiverton, Ontario
N0G 2T0

ONTARIO POWER
GENERATION