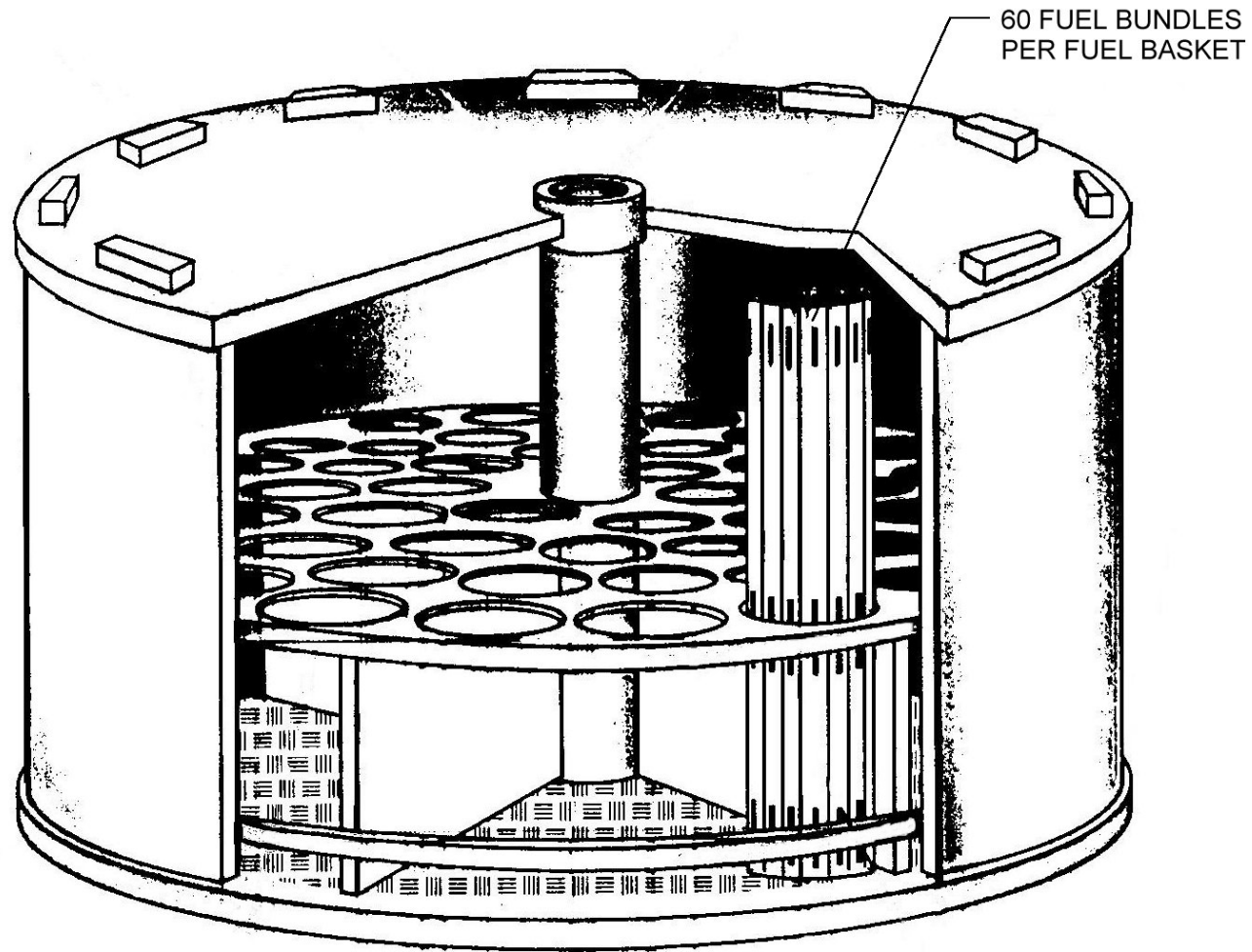


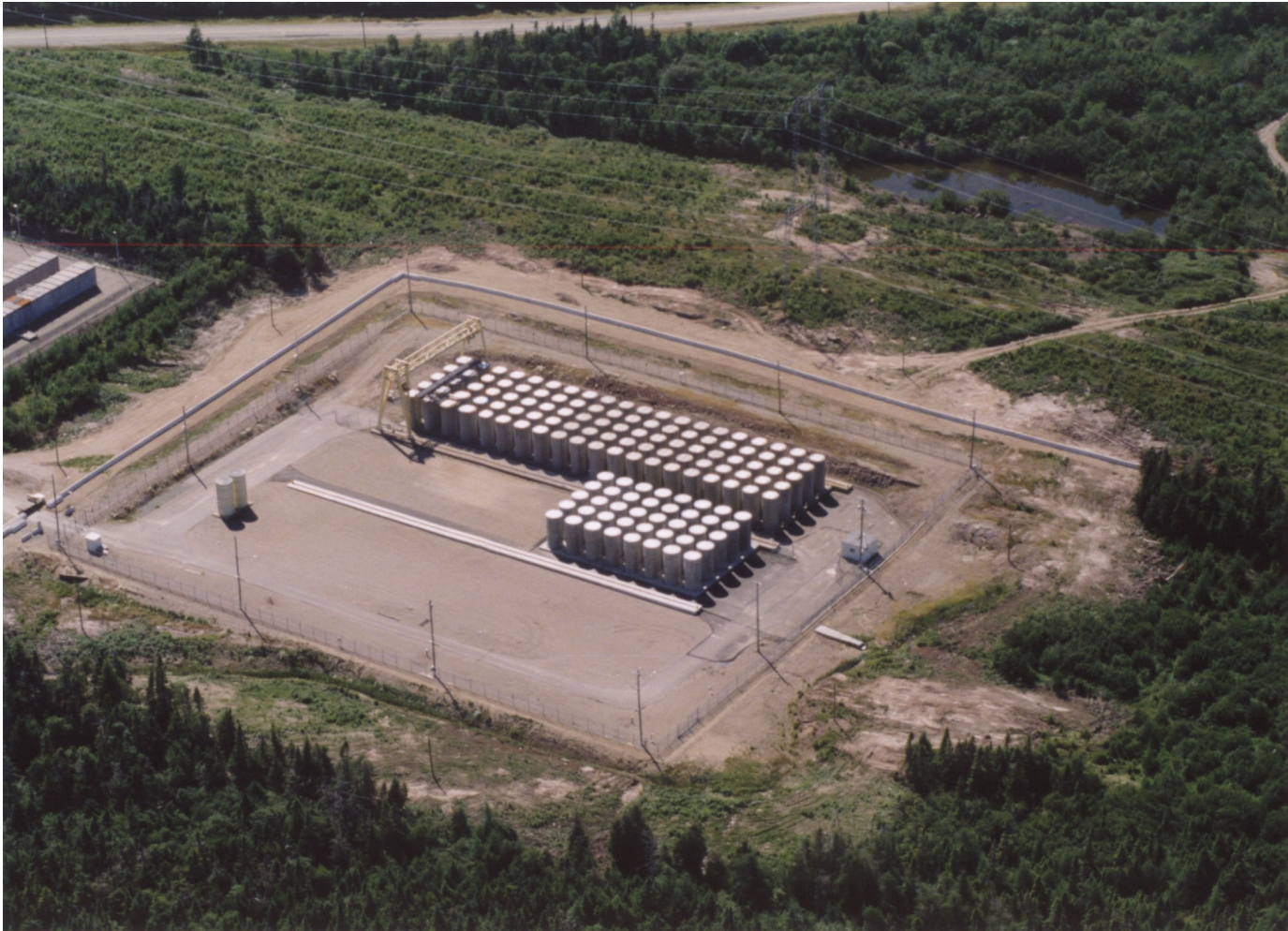
**Figure 1 – CANDU Fuel Bundle**



FUEL BASKET DIMENSIONS:-  
OUTSIDE DIAMETER = 1070mm  
HEIGHT = 560mm

FUEL BASKET WEIGHTS:-  
EMPTY = 450 Kg  
FULLY LOADED = 1924 Kg  
(60 FUEL BUNDLES)

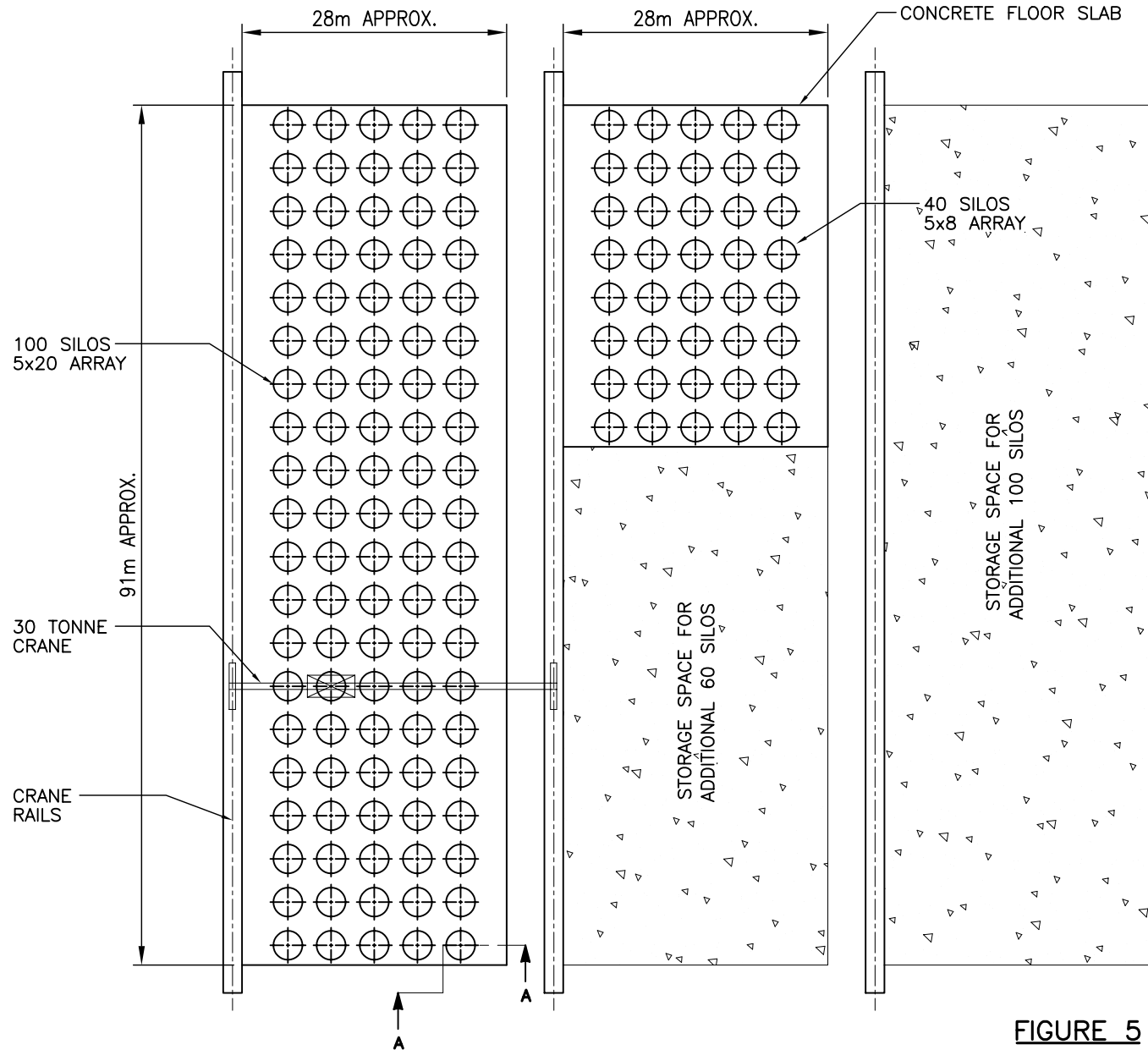
**Figure 2 – Fuel Basket**



**Figure 3. Current Silo Array Aerial View.**



**Figure 4. Current Silo Array.**

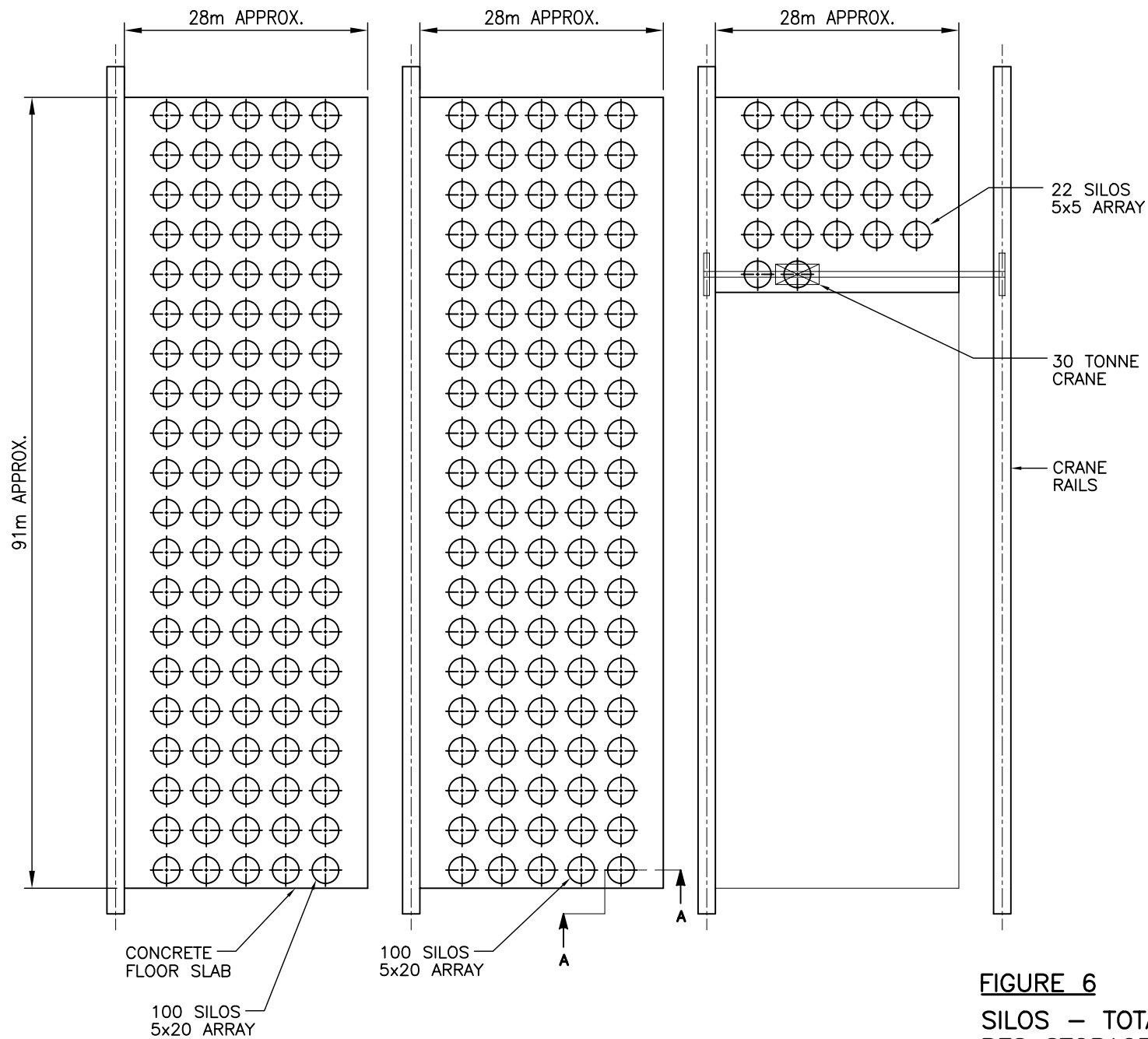


CURRENT STORAGE  
TOTAL = 140 SILOS

FOR SECTION SEE FIGURE 7



**FIGURE 5**  
**SILOS**  
**CURRENT STORAGE FACILITY – PLAN**  
**N.B.P. – POINT LEPREAU**



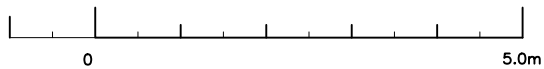
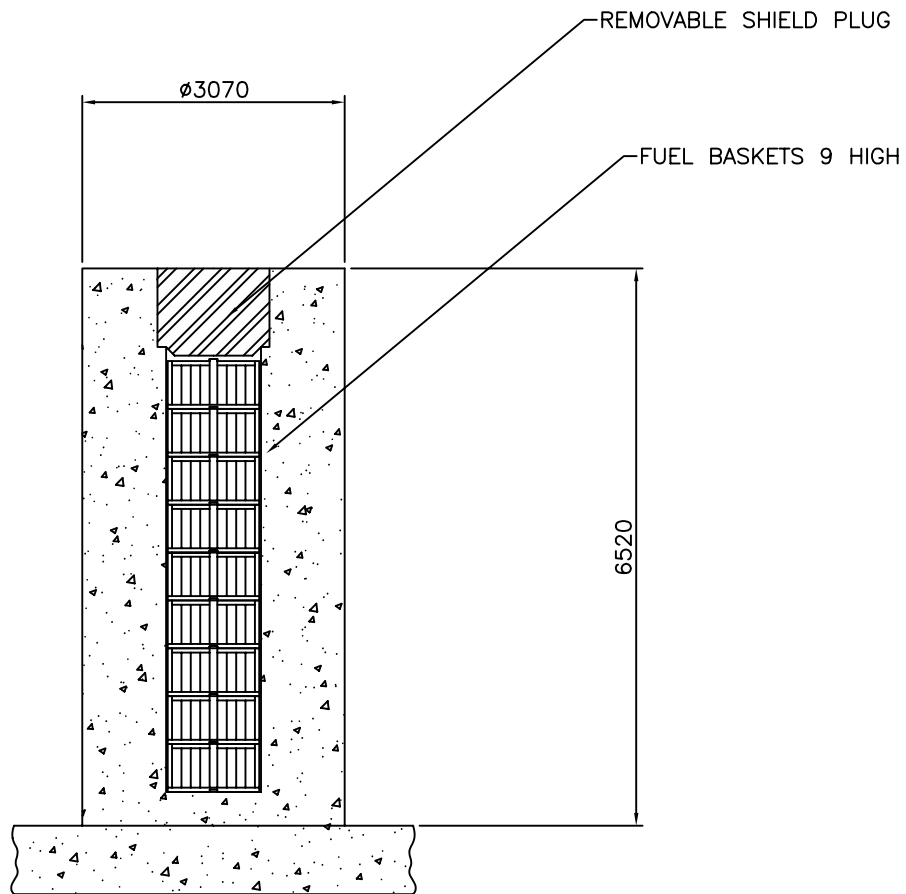
USED FUEL INVENTORY  
AT NBP POINT LEPREAU  
REACTOR SITE :-

1,992 BASKETS = 222 SILOS

FOR SECTION SEE FIGURE 7

**FIGURE 6**

**SILOS - TOTAL INVENTORY  
RES STORAGE FACILITY - PLAN  
N.B.P. - POINT LEPREAU**



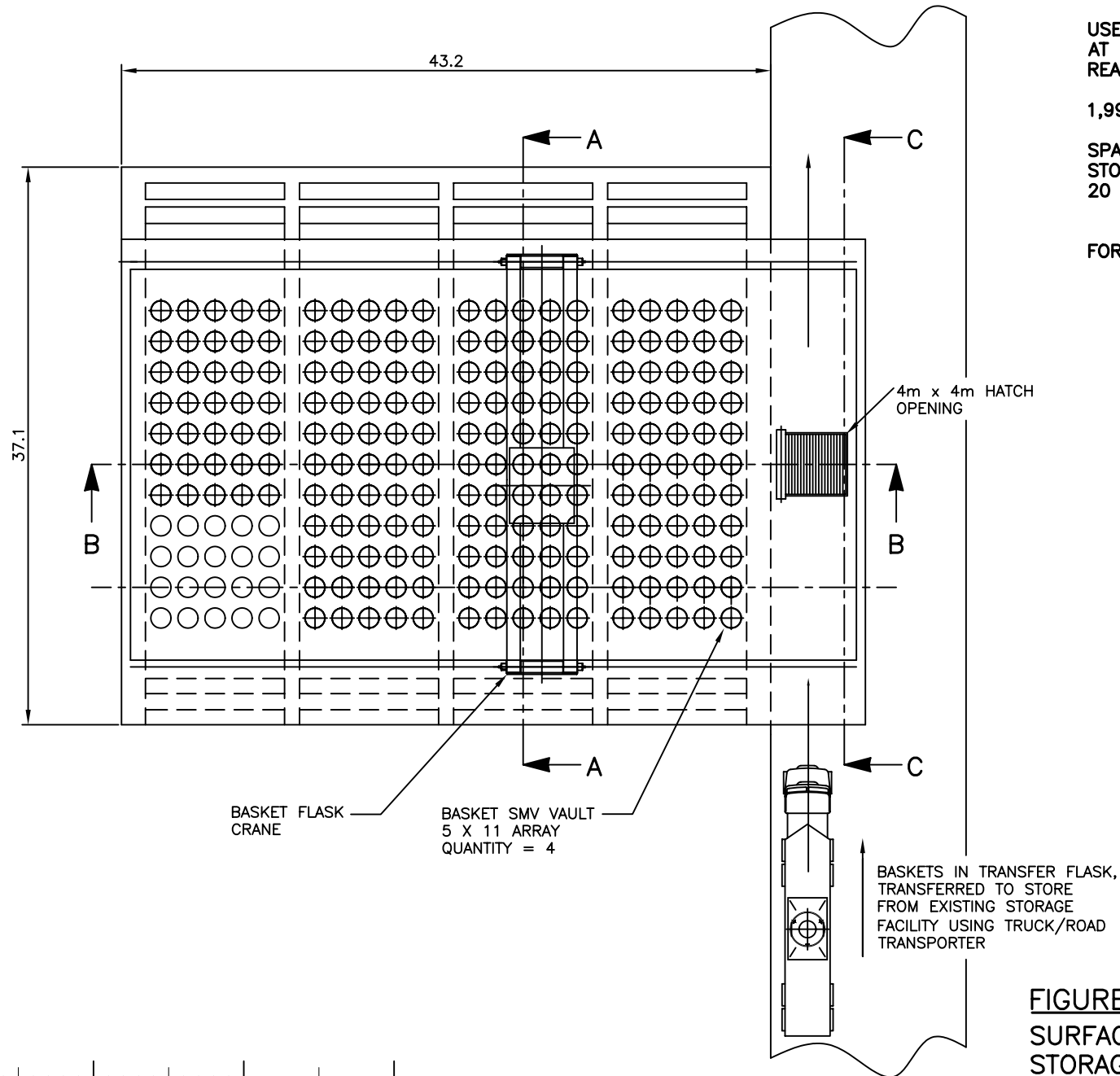
**FIGURE 7**  
SECTION 'A'-'A' FROM  
FIGURES 5 AND 6 THROUGH  
BASKET SILO

**USED FUEL INVENTORY  
AT NBP POINT LEPREAU  
REACTOR SITE :-**

**1,992 BASKETS**

**SPACE REQUIRED FOR 200 STORAGE TUBES  
STORAGE SPACE AVAILABLE FOR 220 TUBES  
20 SPARE TUBES**

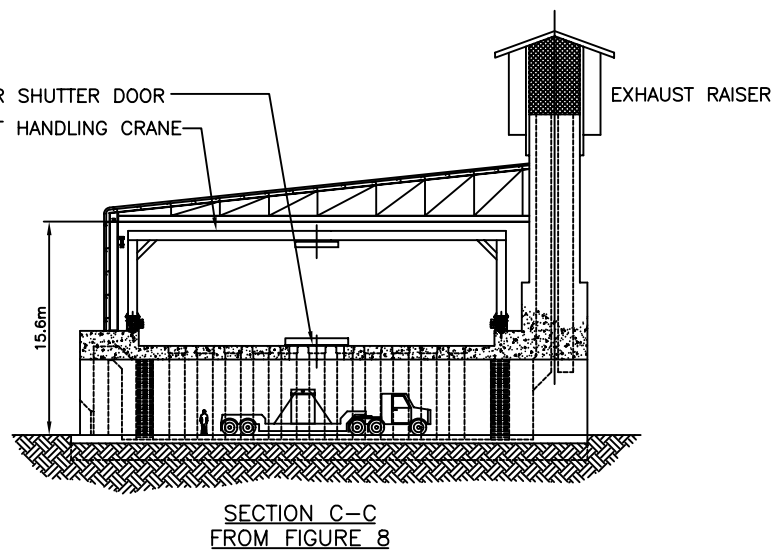
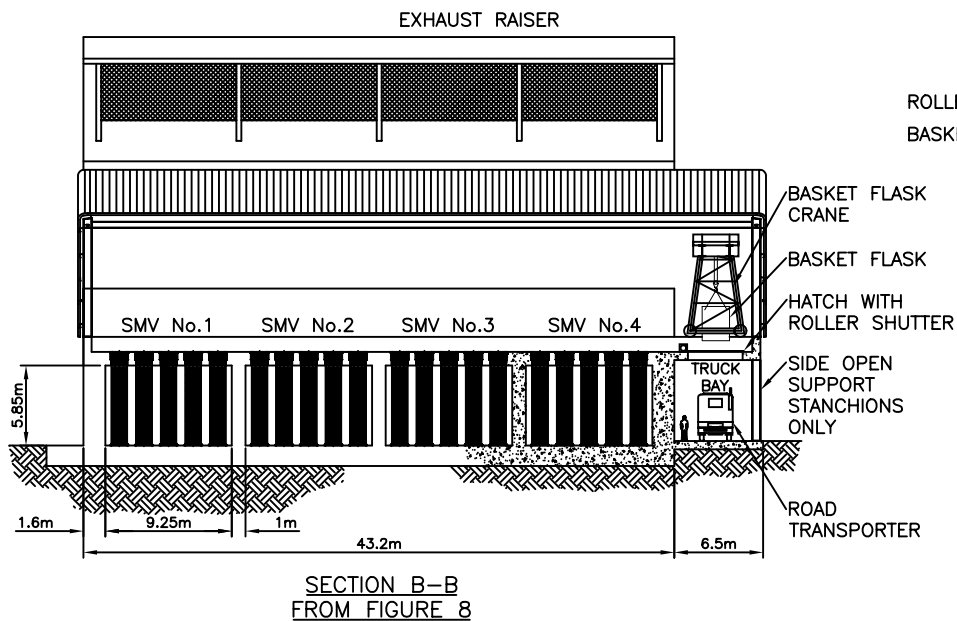
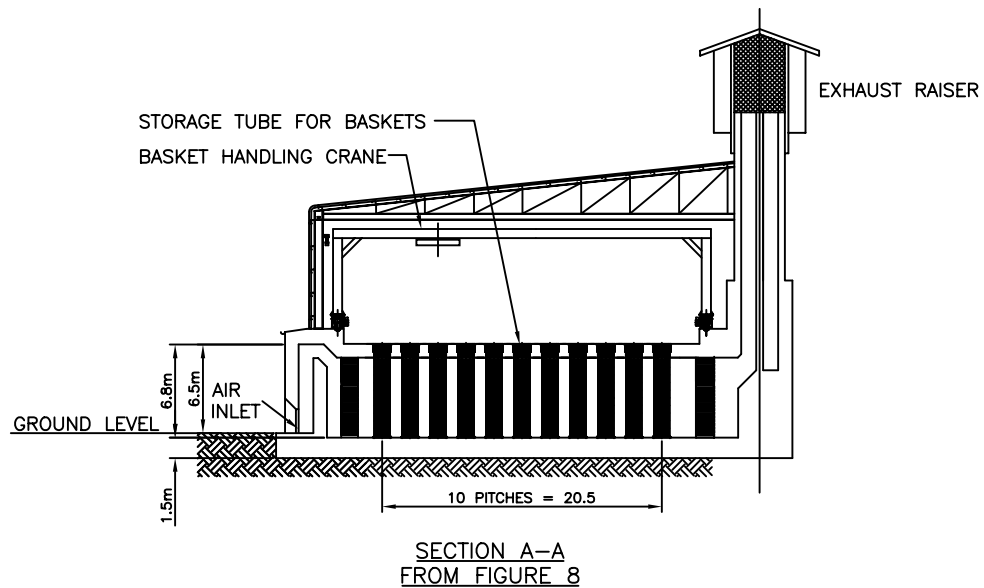
**FOR SECTIONS SEE FIG. 8**



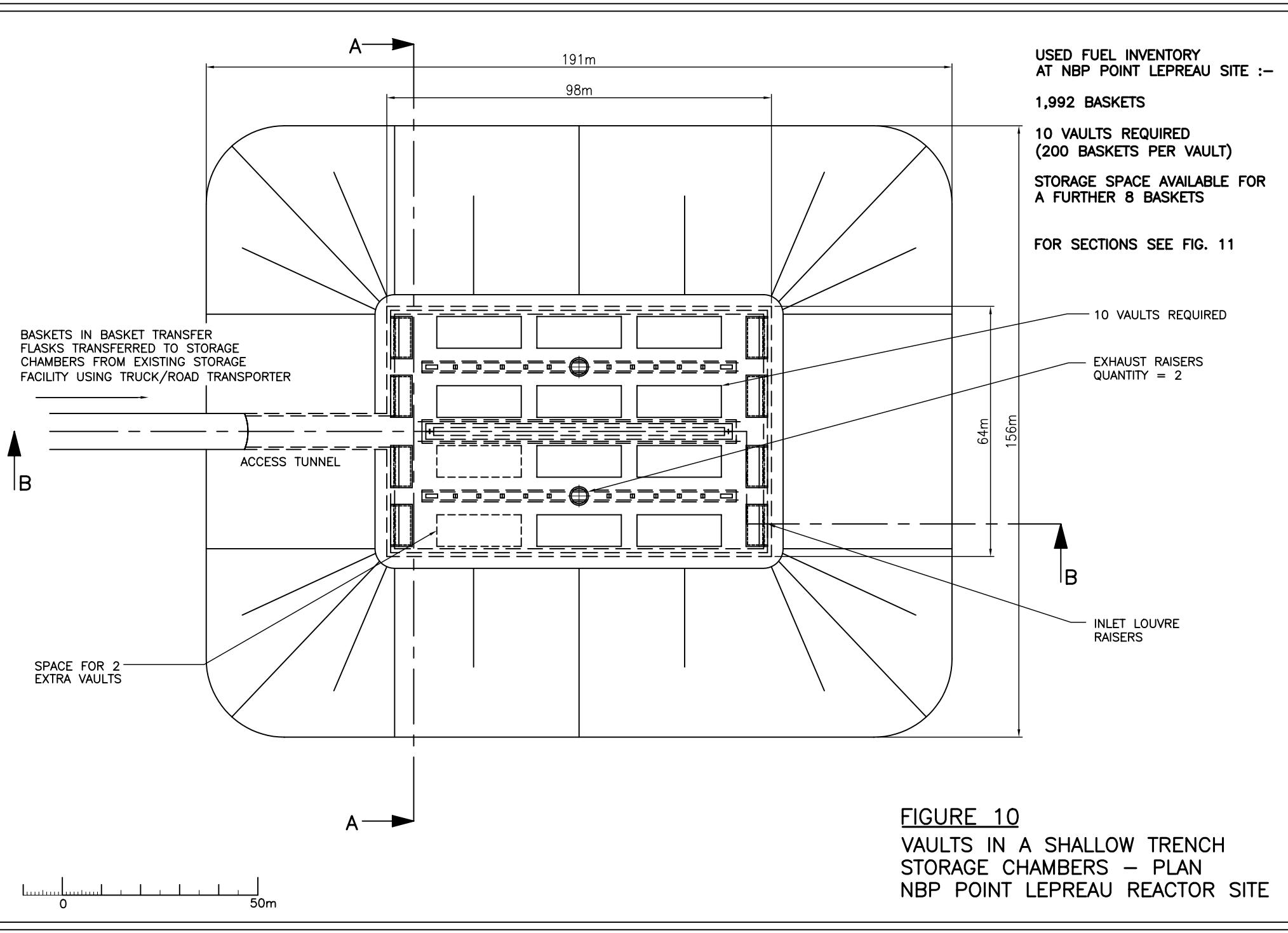
**FIGURE 8**

**SURFACE MODULAR VAULT  
STORAGE COMPLEX – PLAN  
NBP POINT LEPREAU REACTOR SITE**





**FIGURE 9**  
**SURFACE MODULAR VAULT**  
**STORAGE COMPLEX – SECTIONS**  
**NBP POINT LEPREAU REACTOR SITE**



USED FUEL INVENTORY  
AT NBP POINT LEPREAU SITE :-

1,992 BASKETS

10 VAULTS REQUIRED  
(200 BASKETS PER VAULT)

STORAGE SPACE AVAILABLE FOR  
A FURTHER 8 BASKETS

FOR SECTIONS SEE FIG. 11

BASKETS IN BASKET TRANSFER  
FLASKS TRANSFERRED TO STORAGE  
CHAMBERS FROM EXISTING STORAGE  
FACILITY USING TRUCK/ROAD TRANSPORTER

ACCESS TUNNEL

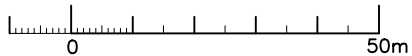
SPACE FOR 2  
EXTRA VAULTS

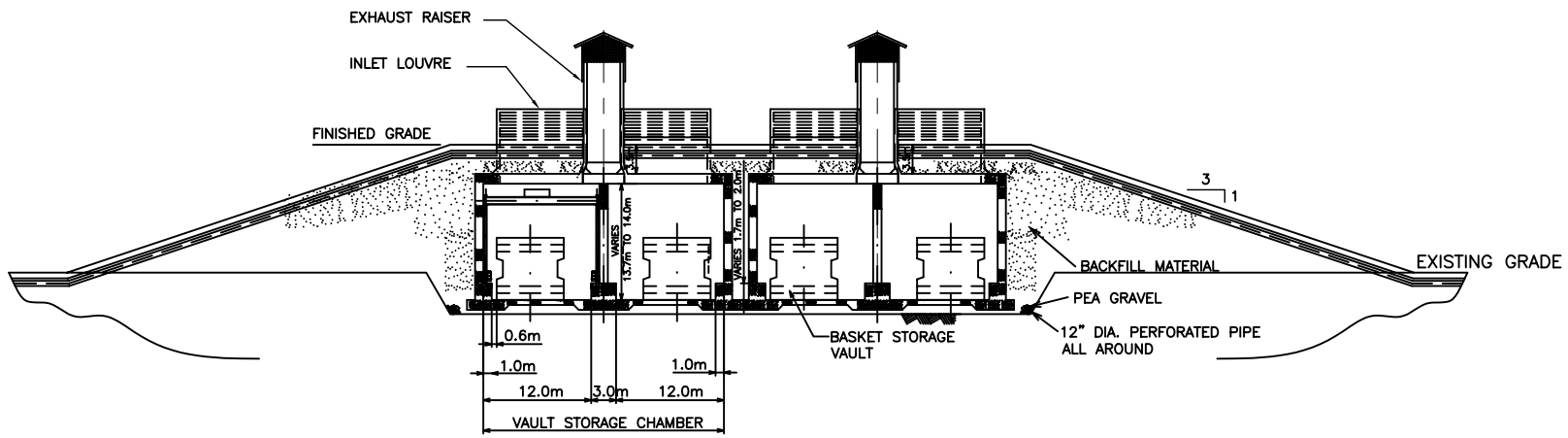
10 VAULTS REQUIRED

EXHAUST RAISERS  
QUANTITY = 2

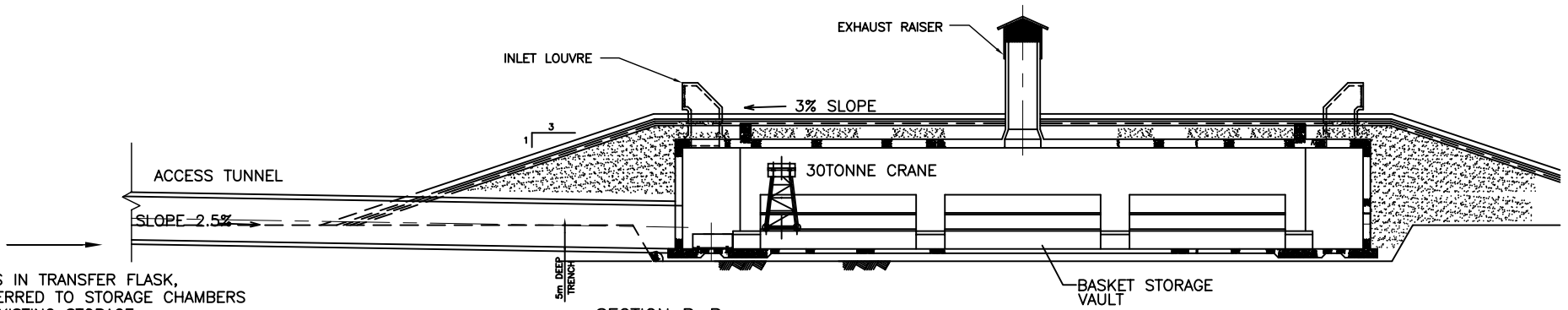
INLET LOUVRE  
RAISERS

**FIGURE 10**  
VAULTS IN A SHALLOW TRENCH  
STORAGE CHAMBERS – PLAN  
NBP POINT LEPREAU REACTOR SITE



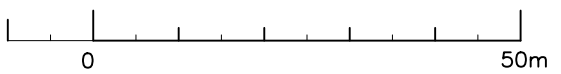


SECTION A-A  
FROM FIGURE 10



SECTION B-B  
FROM FIGURE 4.3

BASKETS IN TRANSFER FLASK,  
TRANSFERRED TO STORAGE CHAMBERS  
FROM EXISTING STORAGE  
FACILITY USING TRUCK/ROAD  
TRANSPORTER



**FIGURE 11**  
VAULTS IN A SHALLOW TRENCH  
STORAGE CHAMBERS – SECTIONS  
NBP POINT LEPREAU REACTOR SITE