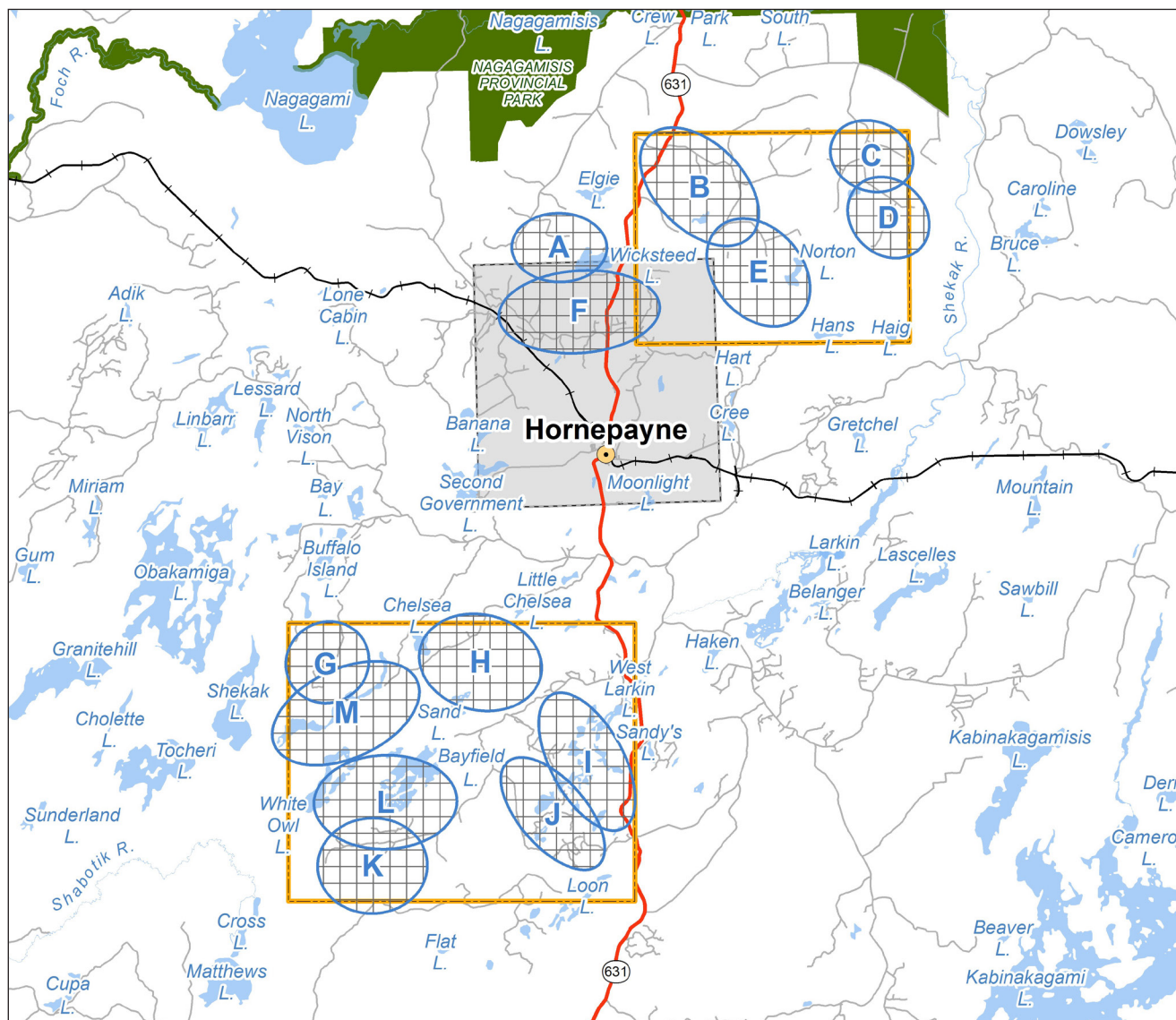


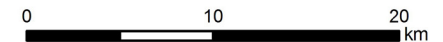
Potentially Geologically Suitable Areas Based on Early Phase 2 Studies – For Discussion with People in the Area

The Hornepayne area is one of several that are involved in the site selection process for a deep geological repository for Canada's used nuclear fuel. Based on early studies, potential geologically suitable areas have been identified for discussion with people in the area about where to focus initial borehole drilling.



LEGEND

- Potentially Suitable Repository Area Based On Geology For Discussion
- Temporary Withdrawal
- HWY 631
- Road
- Railway
- Municipal Boundary
- Provincial Park
- Waterbody




REFERENCES

Base Data - MNR LIO, obtained 2009-2015, CANMAP v2006.4

Projection: Universal Transverse Mercator
Datum: NAD83 Coordinate System: UTM Zone 16N

SCALED REPOSITORY FOOTPRINT FOR REFERENCE

Approx. Surface Facility Footprint (600x550m)  Approx. Underground Repository Footprint (3x2km)

04/07/2017

nwmo

NUCLEAR WASTE MANAGEMENT ORGANIZATION
SOCIÉTÉ DE GESTION DES DÉCHETS NUCLÉAIRES