

# MICROSEISMIC MONITORING PROJECT, SOUTH BRUCE

*Annual Event Summary Report (January 1, 2023  
- December 31, 2023)*

**APM-REP-01332-0460**

**April 2024**

## **Nanometrics**

**nwmo**

NUCLEAR WASTE  
MANAGEMENT  
ORGANIZATION

SOCIÉTÉ DE GESTION  
DES DÉCHETS  
NUCLÉAIRES

This report has been prepared under contract to NWMO. The report has been reviewed by NWMO, but the views and conclusions are those of the authors and do not necessarily represent those of the NWMO.

All copyright and intellectual property rights belong to NWMO.

**Nuclear Waste Management Organization**

22 St. Clair Avenue East, 4<sup>th</sup> Floor  
Toronto, Ontario  
M4T 2S3  
Canada

Tel: 416-934-9814  
Web: [www.nwmo.ca](http://www.nwmo.ca)



# South Bruce Area Microseismic Monitoring Project

## Annual Event Summary Report

(January 1, 2023 - December 31, 2023)

Prepared for



NUCLEAR WASTE  
MANAGEMENT  
ORGANIZATION

SOCIÉTÉ DE GESTION  
DES DÉCHETS  
NUCLÉAIRES

**South Bruce Area Microseismic Monitoring Project  
Annual Event Summary Report  
(January 1, 2023 - December 31, 2023)**

**Nanometrics Document Number: NMX-NWMO-SB-AESR-2023**

**Revision: R1.1**

**NWMO Document #: APM-REP-01332-0460**

**Prepared By:**

**Prepared By:**

<b>Name:</b>	Nathan Hermawan
<b>Position:</b>	Geophysical Analyst, Data Center Solutions
<b>Department / Company:</b>	Seismic Monitoring Services / Nanometrics

**Prepared By:**

<b>Name:</b>	Alberto Vivas
<b>Position:</b>	Team Lead, SMS Field Operations
<b>Department / Company:</b>	Seismic Monitoring Services / Nanometrics

**Approved By:**

<b>Name:</b>	Ben Witten
<b>Position:</b>	Manager, Geophysical Data Analytics
<b>Department / Company:</b>	Seismic Monitoring Services / Nanometrics

### Revision Summary

Rev	Date	Authors	Comments
R1.1	2024-04-08	Nathan Hermawan	Resolved minor corrections provided by NWMO
R1.0	2024-01-16	Nathan Hermawan	Resolved comments provided by NWMO
R0.0	2023-11-20	Nathan Hermawan	Initial draft

**ATTENTION: PLEASE READ CAREFULLY.**

The information contained in this document is intended to report and provide insights for the use of the recipient organization, the Nuclear Waste Management Organization ("NWMO"), who accepts full responsibility for its use. Recipient organization acknowledges that the overall outputs contained in this document must be considered estimates by their nature, as they are dependent upon measurements and mathematical models with varying levels of inherent uncertainty and assumptions that are typical of empirical and statistical analysis. The findings in this document should be assessed as a whole and any attempt to rely on partial analysis or summary descriptions in this document could lead to undue emphasis on particular factors or inaccurate conclusions.

Except as may otherwise have been agreed to between Nanometrics Inc. ("Nanometrics") and NWMO, Nanometrics specifically disclaims any other representations or warranties, express and/or implied, with respect to the report and any information contained therein. Nanometrics makes no representations or warranties, express or implied, to any third party (other than NWMO) with respect to this document and the information contained herein, including, but not limited to any warranties of merchantability, merchantable quality or fitness for a particular purpose. In no event will Nanometrics, or its partners, suppliers, employees or agents, be liable to any third party (other than NWMO) for any loss, damage, cost or expense of any kind, including any direct, consequential, special or other damages, arising in connection with this document or the information contained herein, including with respect to any use of, reliance upon, or decision made or action taken based on this document or any information contained herein.

## Table of Contents

<b>Abbreviations</b>	<b>2</b>
<b>1. Introduction</b>	<b>4</b>
<b>2. Network Operations</b>	<b>5</b>
2.1. Seismic Monitoring Network	6
2.2. Operational Statistics and Maintenance Records	7
2.3. Station State of Health Summary	8
<b>3. Seismic Data Processing</b>	<b>9</b>
3.1. Automatic Event Detection	9
3.2. Manual Review	9
<b>4. Network Performance</b>	<b>11</b>
<b>5. Seismic Velocity Model</b>	<b>12</b>
5.1. 3D Velocity Model	13
<b>6. Event Activity within the AOI</b>	<b>16</b>
<b>7. Anthropogenic Activity</b>	<b>19</b>
<b>8. Event Location Accuracy</b>	<b>20</b>
<b>9. Magnitude of Completeness</b>	<b>22</b>
<b>10. Data Delivery</b>	<b>24</b>
<b>11. Summary</b>	<b>24</b>
<b>12. References</b>	<b>26</b>
<b>Appendix A: Daily Station Data Availability</b>	<b>27</b>
<b>Appendix B: Waveforms of Events Detected within the AOI</b>	<b>41</b>
<b>Appendix C: CHIS Events (January 1 2023 - December 31 2023)</b>	<b>48</b>

## Abbreviations

**AOI:** Area of interest for the Microseismic Monitoring Program to detect and quantify microseismicity approximately 50 km around the South Bruce Site.

**APM:** Adaptive Phased Management

**CF:** Characteristic function for trigger detection algorithm

**CHIS:** Canadian Hazards Information Service

[nanometrics.ca](https://nanometrics.ca)

3001 Solandt Rd, Kanata, Ontario, Canada K2K 2M8

**Tel** +1 613 592 6776 | **Toll Free** 1 855 792 6776 (NA) | **Fax** +1 613 592 5929

**IRIS:** Incorporated Research Institutions for Seismology

**Mc:** Magnitude of completeness for the monitoring network

**ML:** Local magnitude scale

**MSL:** Mean sea level datum

**NWMO:** Nuclear Waste Management Organization

**Program:** Microseismic monitoring program for the South Bruce Site

**SNR:** Signal to noise ratio

**STA/LTA:** Short-time average through long-time average trigger detection algorithm

**V<sub>p</sub>:** Seismic propagation velocity of P-waves

**V<sub>s</sub>:** Seismic propagation velocity of S-waves

**WGS84:** World Geodetic System (1984)



## 1. Introduction

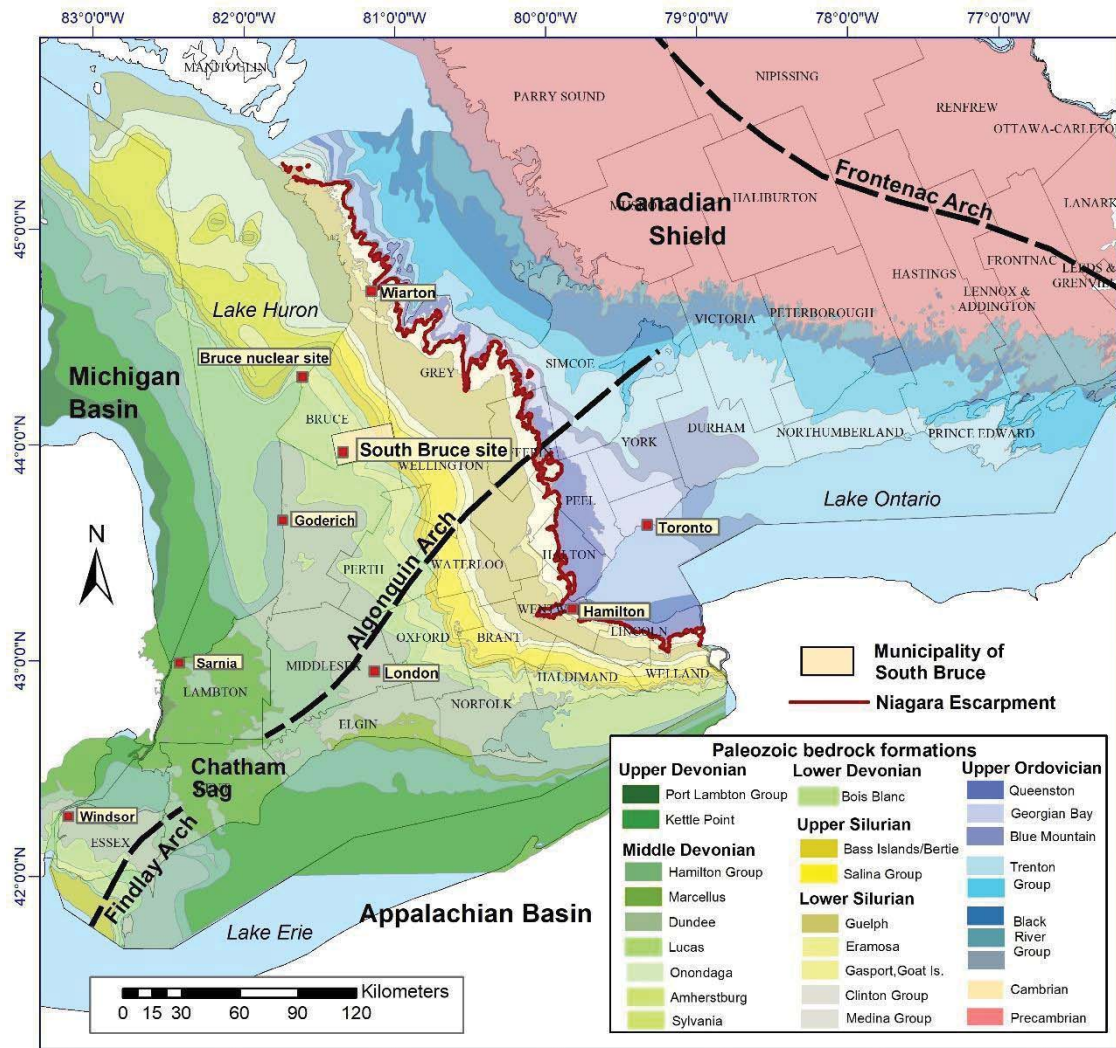
The Nuclear Waste Management Organization (“NWMO”) is responsible for implementing Adaptive Phased Management (“APM”), Canada’s plan for the long-term management of used nuclear fuel. The ultimate objective of APM is the centralized containment and isolation of used nuclear fuel in a deep geological repository located at a safe site in an informed and willing host community. NWMO is committed to implementing the project in a manner that protects human health, safety, security and the environment, while fostering the long-term well-being of the community and region in which it is implemented.

The Microseismic Monitoring Program (“Program”) in the South Bruce area is part of Phase 2 Geoscientific Preliminary Field Investigations of the NWMO’s APM Site Selection phase. The objective of the Program is to install a network of five seismic stations (broadband seismometers) and provide continuous monitoring and reporting of earthquake activity for an Area of Interest (“AOI”) around the potential repository area (i.e., South Bruce Site) located in the southern Ontario (Figure 1). The Program seeks to develop the ability to detect and quantify microseismicity within a predefined region approximately 50 km around the South Bruce Site (Figure 2).

Nanometrics was contracted by NWMO for the implementation of the Program. Work activities that have been included in the Program are:

- Design of seismic monitoring network,
- Initial field assessments of station locations,
- Installation and maintenance of stations,
- Data acquisition, archiving and processing, and
- Annual cataloging of data and seismic events detected in the AOI.

This report is prepared by Nanometrics. It includes an annual summary of the Program for activities performed in 2023 regarding network operations, seismic data processing and event detection. An overview of work done for the derivation of a velocity model as well as the assessment of event location accuracy and network magnitude of completeness are also presented in this report.



**Figure 1.** Bedrock geology of southern Ontario, derived from Somers (2017) and Carter et al (2019, 2021).

## 2. Network Operations

A summary of operational activities, including the installation and maintenance of the monitoring network as well as the statistics on the station state of health and data completeness are presented in this section.

[nanometrics.ca](https://nanometrics.ca)

3001 Solandt Rd, Kanata, Ontario, Canada K2K 2M8

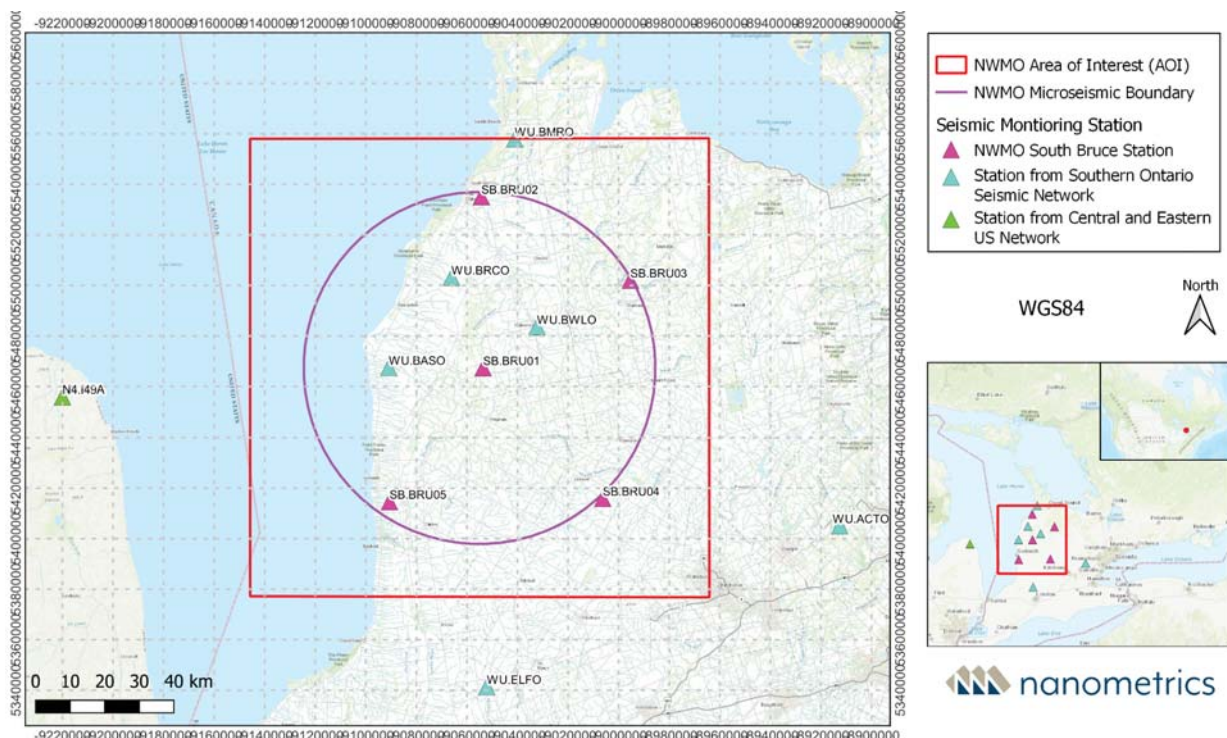
Tel +1 613 592 6776 | Toll Free 1 855 792 6776 (NA) | Fax +1 613 592 5929

## 2.1. Seismic Monitoring Network

NWMO South Bruce seismic monitoring network consists of five stations (broadband seismometers), all located inside the AOI. All five of these stations stream data in real-time. The station locations are shown in Figure 2.

There are seven additional stations from public seismic monitoring networks in the area:

- WU.ACTO, WU.BASO, WU.BMRO, WU.BRCO, WU.BWLO, and WU.ELFO from the Southern Ontario Seismic Network, and
- N4.I49A from the Central and Eastern US Network



**Figure 2.** Locations of NWMO South Bruce stations within the AOI. Public stations from national seismic networks incorporated into the Program are also shown. Microseismic Boundary represents the 50 km area around the South Bruce Site for microseismic monitoring. NWMO Area of Interest (AOI) represents the area defined by NWMO for detection, manual review and reporting of seismic activity.

These seven public stations are also included in the Program. Their waveform data are streamed from the Incorporated Research Institutions for Seismology (“IRIS”) and included in the data processing for event detection.

## 2.2. Operational Statistics and Maintenance Records

The first South Bruce NWMO station (SB.BRU01) was installed close to one of the drilled boreholes, near the center of the network, on July 30th, 2021. The site surveys and the installation for the remaining four stations were completed in November 2021. Table 1 shows the installation dates for South Bruce NWMO stations.

**Table 1.** Installation dates of NWMO stations

Station	Installation Date
SB.BRU01	2021-07-30
SB.BRU03	2021-11-07
SB.BRU02	2021-11-08
SB.BRU04	2021-11-08
SB.BRU05	2021-11-09

Table 2 shows a summary of station maintenance activities performed in 2023. Detailed station maintenance records were delivered to NWMO as they occurred and reference can be made to those documents for detailed descriptions. NWMO has taken the ownership of maintenance visits to replace GPS antennas as needed.

**Table 2.** NWMO station maintenance details

Date	Station	Notes
2021-11-12	SB.BRU01	GPS antenna has been replaced
2022-05-17	SB.BRU01	The data recorder (Centaur) was replaced for a loaner data recorder. The digitizer removed from the station Serial number 8467 was shipped to Kanata for verification where the GPS engine was



		replaced under warranty, the same was installed back at the station with the South Bruce NWMO personnel help. The station has been recording and transmitting data with ~100% data availability
2022-05-17	SB.BRU02 SB.BRU03 SB.BRU04	Preventive maintenance was performed to replace the GPS antennas at the stations.
2023-09-06	SB.BRU02	The station went offline on the day prior and would not charge. NWMO staff could not identify an obvious issue. Breaker was turned off, and began charging when it was turned on again.
2023-10-16	All	Complete 2023 annual inspection

### 2.3. Station State of Health Summary

Nanometrics actively monitors the state of health for streaming stations. If cellular connection to a station is lost temporarily (i.e., no data transmission), the station will continue recording data, as long as it maintains battery life. When the connection is restored, data transfer continues and the incomplete data is automatically filled, typically allowing for the continuation of 100% data collection. Stations were installed in rural areas and are working on batteries with the help of solar panels. Table 3 shows the station data availability (in percent) from January 1st, 2023 to December 31st, 2023, on a monthly basis. Tables provided in Appendix A show data availability on a daily basis. The South Bruce stations have not experienced any data lost since the installation.

**Table 3.** Station data availability (in percent) from January 1st, 2023 up to and including December 31st, 2023.

Station	Jan-2023	Feb-2023	Mar-2023	Apr-2023	May-2023	Jun-2023	Jul-2023
SB.BRU01	100	100	100	100	100	100	100
SB.BRU02	100	100	100	100	100	100	100
SB.BRU03	100	100	100	100	100	100	100
SB.BRU04	100	100	100	100	100	100	100
SB.BRU05	100	100	100	100	100	100	100

	Aug-2023	Sep-2023	Oct-2023	Nov-2023	Dec-2023		
SB.BRU01	100	100	100	100	100		
SB.BRU02	100	100	100	100	100		
SB.BRU03	100	100	100	100	100		
SB.BRU04	100	100	100	100	100		
SB.BRU05	100	100	100	100	100		

### 3. Seismic Data Processing

An overview of seismic data processing workflow for the detection and characterization of seismic events is presented in this section.

#### 3.1. Automatic Event Detection

Seismic monitoring stations continuously record ground vibrations generated by anthropogenic activities (e.g., mining/quarry blasts - discussed in Section 6) and natural phenomena, including earthquakes. The NWMO South Bruce stations are equipped with highly sensitive seismometers that can detect vibrations well-below human perception. The recorded data are streamed to the Nanometrics Cloud Data Center in near real-time, for data processing.

The continuous waveform data acquired from each station is processed through a short-time-average through long-time-average ("STA/LTA") trigger detection algorithm. The algorithm predicts a characteristic function ("CF") of the signal based on continuously-moving short-time and long-time windows and declares a trigger when the CF exceeds a pre-set threshold. The automatic processing system declares an event when a minimum of four time-correlated seismic phase arrivals are picked at a minimum of four stations.

#### 3.2. Manual Review

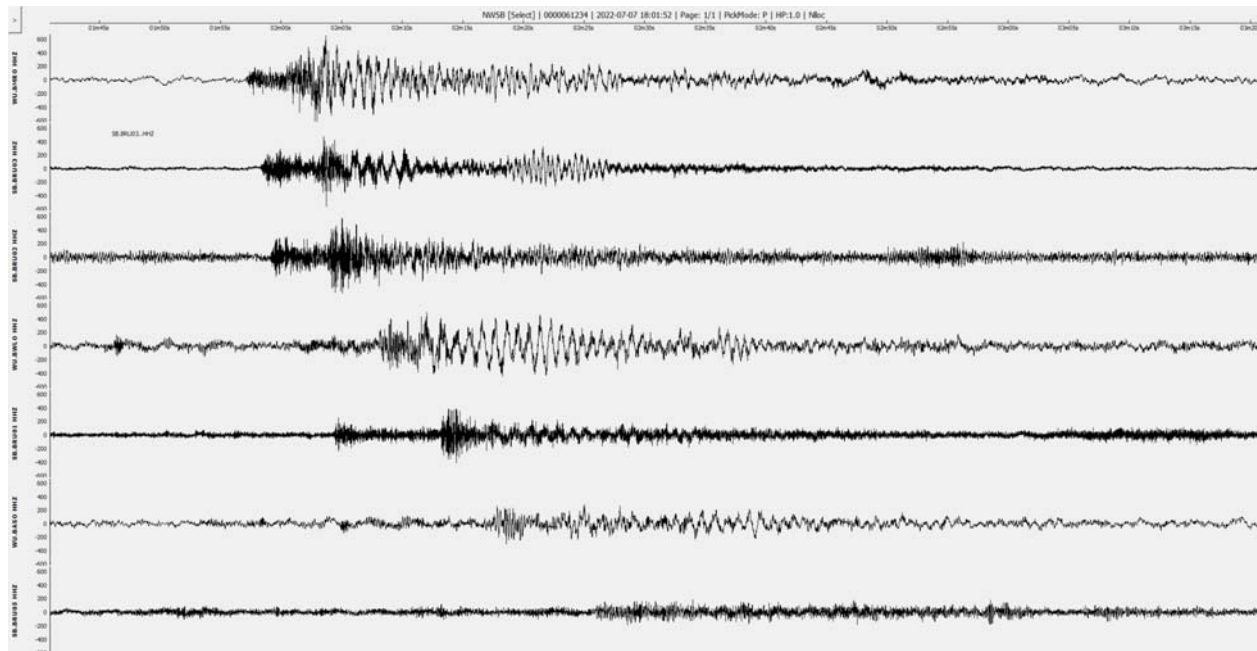
Not every automatic event detection would necessarily be associated with an earthquake. Event waveforms are reviewed by experienced analysts on a next day basis, in order to confirm if they are seismic activities or are non-seismic events due to anthropogenic activity. False positives (incorrect classification of random noise) are removed. For

confirmed events, the review process also involves adjustment of automatic picks for phase arrivals and peak amplitudes, if deemed necessary, in order to ensure the quality of event solution (origin time, hypocenter location and magnitude). Following the manual adjustment of phase and amplitude picks, events are re-processed to determine the final event solutions.

Earthquake hypocenter locations are determined based on an 3D velocity model derived from velocity data provided by NWMO (reader is referred to Section 5 for details about velocity models).

Events that fall outside of the AOI after manual review are not included in the Program.

Event magnitudes are determined in terms of Richter local magnitude (“ML”) based on a model proposed by Hutton and Boore (1987). Seismic events detected within the AOI, figure 3 as an example, are posted to Nanometrics Athena seismicity web portal for NWMO to review.



**Figure 3.** An event detected on July 7th, 2022 that was located inside the AOI - included in the Program.

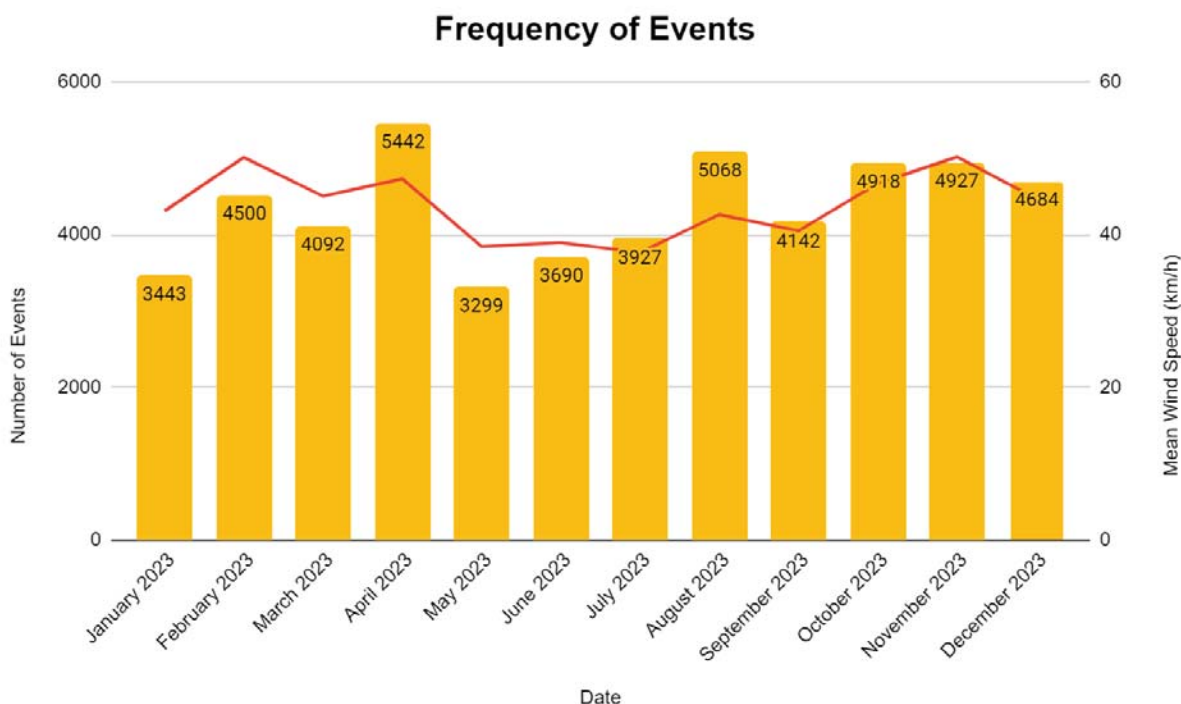
## 4. Network Performance

A summary of the network performance based on automatic event detections is provided in this section.

Automatic event detection is not bounded by the AOI to ensure no events are missed due to automatic event location quality. This results in a large number of automatic event detections, with an average of ~4344 events per month. A total of 52132 events were detected across the region from January 1st, 2023 to December 31st, 2023. Figure 4 shows the distribution of automatic event detections on a monthly basis.

The vast majority of these events were either false positives (detection of random noise) or events that landed outside of the NWMO South Bruce area of interest following manual processing. Several upticks in automatic event detections can be noted, such as in April. Common causes for such influxes of automatic detections are high wind patterns that cause increased vibrations at stations due to the shaking of trees and poles nearby, as indicated by the correlation between detection count and mean wind speed in figure 4.





**Figure 4.** Rates of automatic event detections on a monthly basis in yellow; Mean monthly wind speed in km/h in red.

## 5. Seismic Velocity Model

A velocity model provides information on the seismic velocities present in the underlying geologic structure in an area (i.e. the speed with which seismic waves travel through the subsurface). Seismic velocity information allows for an estimation of distance between an event hypocenter and a recording station. Utilizing this information from several stations allows for the triangulation of earthquake hypocenters.

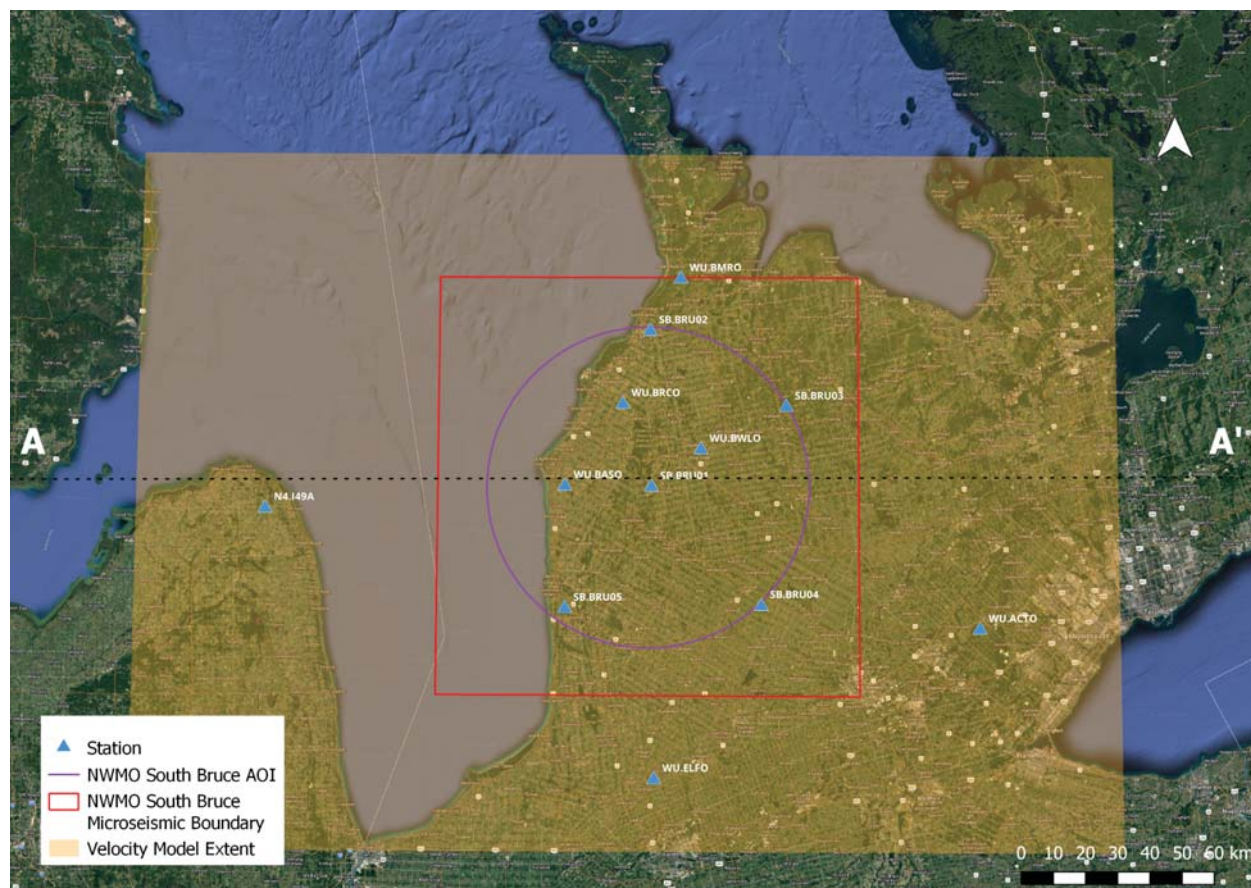
### 5.1. 3D Velocity Model

NWMO has supplied Nanometrics with sonic log and geological horizon data in order to develop a 3D velocity model for the South Bruce region.

Below are the steps used to create a 3D velocity model.

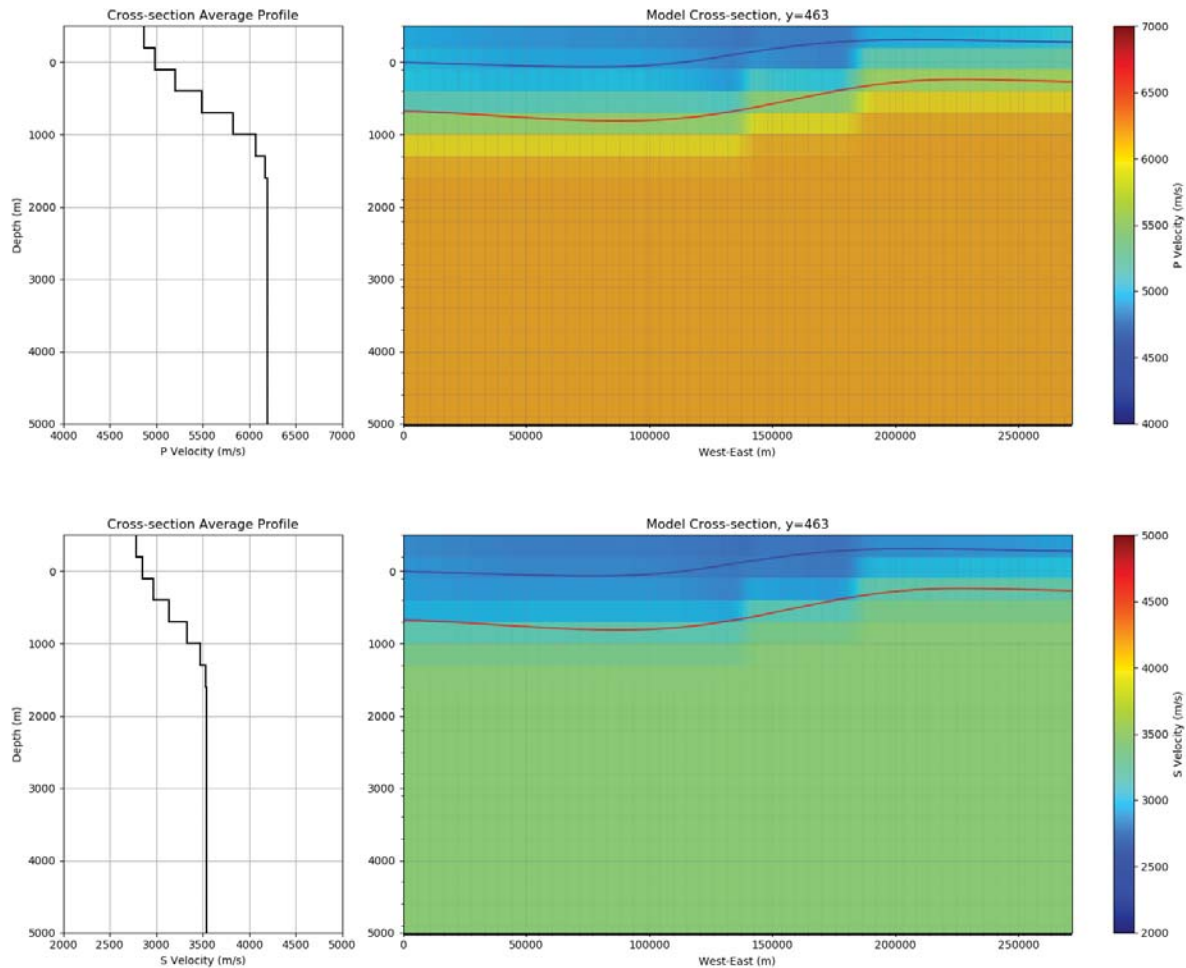
- Define 3D grid space and gather nearby velocity information
- Velocity information (sonic logs) is passed through a moving average in Z direction to filter sharp contrasts
- 2D velocity layers are generated by interpolating the available data
- Working with depth slices (layers) the velocity is smoothly interpolated across the grid space
  - Horizons are used to guide the sonic information
- Prior to interpolation, a cross-validation technique is applied to automatically remove poor data and limit sharp velocity contrasts within the model
- The final 3D volume is constructed by assembling the interpolated layers of the model
- Finally, a 3D smoothing algorithm is applied to further reduce sharp velocity contrasts which is required to improve event location stability within Nanometrics grid-search algorithm

Figure 5 shows the area covered by the velocity model relative to the AOI.



**Figure 5.** Velocity model extent displayed as orange box and cross-section highlighted by black dashed line. Red square shows the AOI and the purple circle represents the microseismic boundary.

Figure 6 shows  $V_p$  and  $V_s$  cross sections of the 3D velocity model along AA' line on figure 5.



**Figure 6. Top:**  $V_p$  cross-section and **Bottom:**  $V_s$  cross-section of the 3D velocity model. The left panels display a cross-section average profile, the right panels display cross-section velocity. The velocity model is extended to 20 km depth.

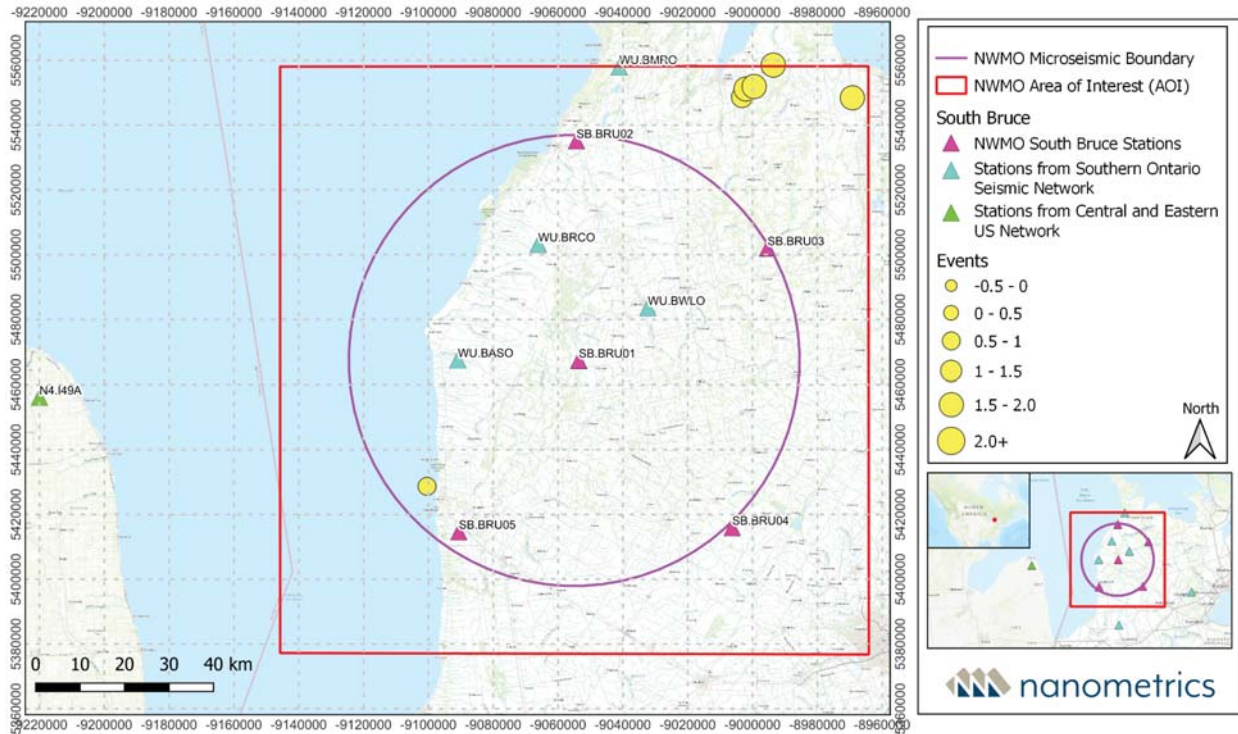
The 3D velocity model is tested against seismic events detected within the AOI. Based on this preliminary assessment, the 3D velocity model provided is in use for locating manual events. This model will require further assessment and refinement upon detecting approximately 100 events. The event locations will be re-calculated based on the 3D velocity model when it is finalized.

## 6. Event Activity within the AOI

This section provides a summary of events observed within the AOI from January 1st, 2023 to December 31st, 2023.

A total of 6 events were observed within the AOI, with 1 regional event originating outside the AOI. 2 seismic events (excluding the regional event) were observed with a local magnitude of 0.77MI and 1.49MI, and 4 quarry blast events were observed with a magnitude range of 1.53MI to 1.67MI. The largest event within the AOI occurred on March 21st, 2023. Figure 7 shows the location of the events observed within the AOI relative to the monitoring network and Table 4 provides a list of these events and their key attributes. The depths of the seismic events were -0.50 km and 1.00 km. Noted blast events in the area range in depth from 0.55 km to 1.30 km relative to mean sea level. The event depths were calculated based on a preliminary 3D velocity model. Depth estimates of blast events are approximate due to their distal location relative to the seismic array, and the preliminary nature of the velocity model. Waveforms obtained from these events are included in Appendix B.





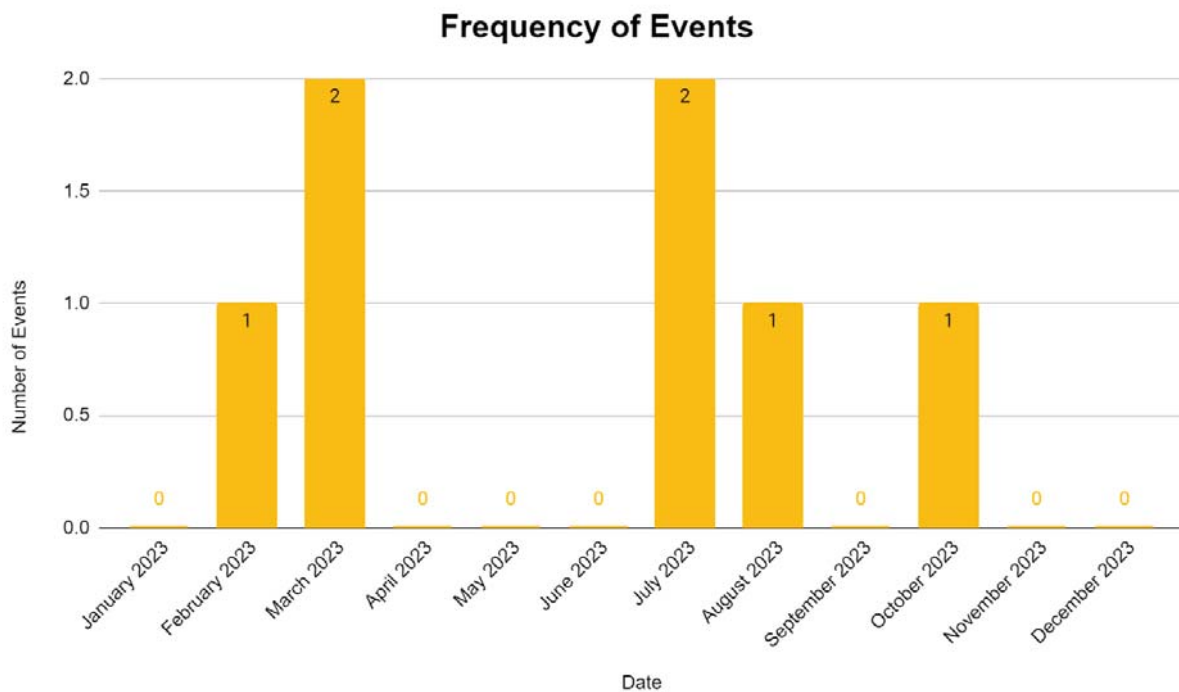
**Figure 7.** Events observed within the AOI from January 1st, 2023 to December 31st, 2023. The cluster of events to the North East of the AOI is associated with quarry blasts.

**Table 4.** Events detected within the AOI from January 1st, 2023 to December 31st, 2023. Depths are measured relative to Mean Sea Level.

Earthquake Origin Date and Time (UTC)	Latitude (WGS84)	Longitude (WGS84)	Depth (km)	Local Magnitude (ML)	Number of Stations with Phase Picks	Number of Phase Picks	Event Type
--	---------------------	----------------------	---------------	----------------------------	--	--------------------------	------------

2023-10-27T18:05:57Z	44.53381	-80.5713	1.3	1.53	9	9	blast
2023-08-31T16:08:54Z	44.53529	-80.8772	1	1.49	8	14	
2023-07-11T16:32:54Z	44.55133	-80.866	0.55	1.54	7	7	blast
2023-07-10T09:25:08Z	43.76174	-81.7504	-0.5	0.77	8	8	
2023-03-21T17:05:59Z	44.55607	-80.8435	1.3	1.67	6	6	blast
2023-03-01T20:20:32Z	44.59847	-80.7906	1.3	1.56	7	7	blast
2023-02-06T11:15:51Z	43.0685	-78.9243	7.02	4.55	10	20	regional

Figure 8 shows the rate of seismic activity in each month.



**Figure 8.** Number of events observed within the AOI on a monthly basis

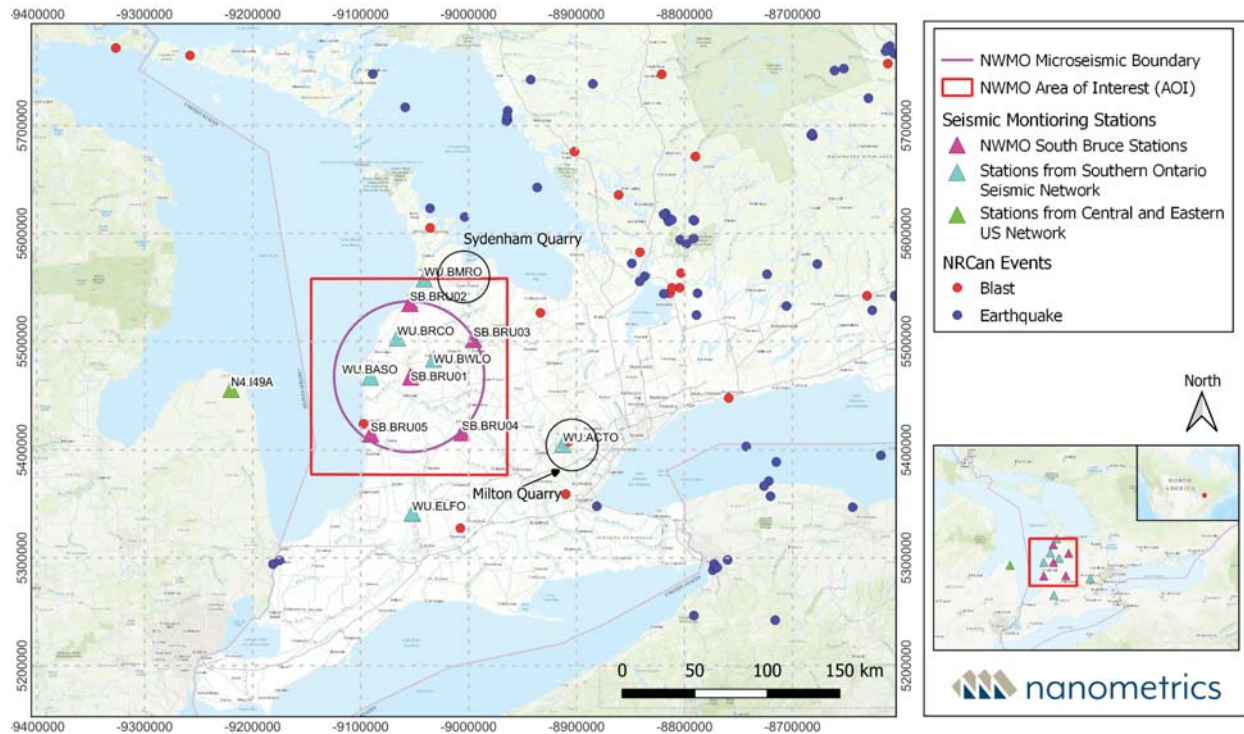
## 7. Anthropogenic Activity

There are a few active quarries located within 150 km of the NWMO network (the maximum distance that an event from a nearby anthropogenic source can be detected). Blasting activities at these quarries are one of the major sources of events detected by the automatic processing system. In the manual review stage, non-seismic events, including mining/quarry blasts, are identified by experienced analysts by visual inspection of recorded waveforms in terms of presence and motion of seismic phases (P and S waves), Wood-Anderson simulated traces, and their correlated timing at multiple stations.

Events detected by the Canadian National Seismograph Network are reviewed and categorized by the Canadian Hazards Information Service ("CHIS") depending on their sources. The historical event catalog is accessible from the Earthquakes Canada website (<https://chis.nrcan.gc.ca/index-en.php>). Figure 9 shows seismic and anthropogenic events identified by CHIS in the region from January 1st, 2023 to December 31st, 2023 (the event list is provided in Appendix C). The events associated with blasting activities by CHIS are clustered around the Sydenham and Milton quarries in Canada.

Most of these events are quarry blasts. However, there are a few events that are labeled by CHIS as seismic events. The seismic events are also included in the event list in Appendix C.





**Figure 9.** Seismic and quarry blast events observed in the region by CHIS.

## 8. Event Location Accuracy

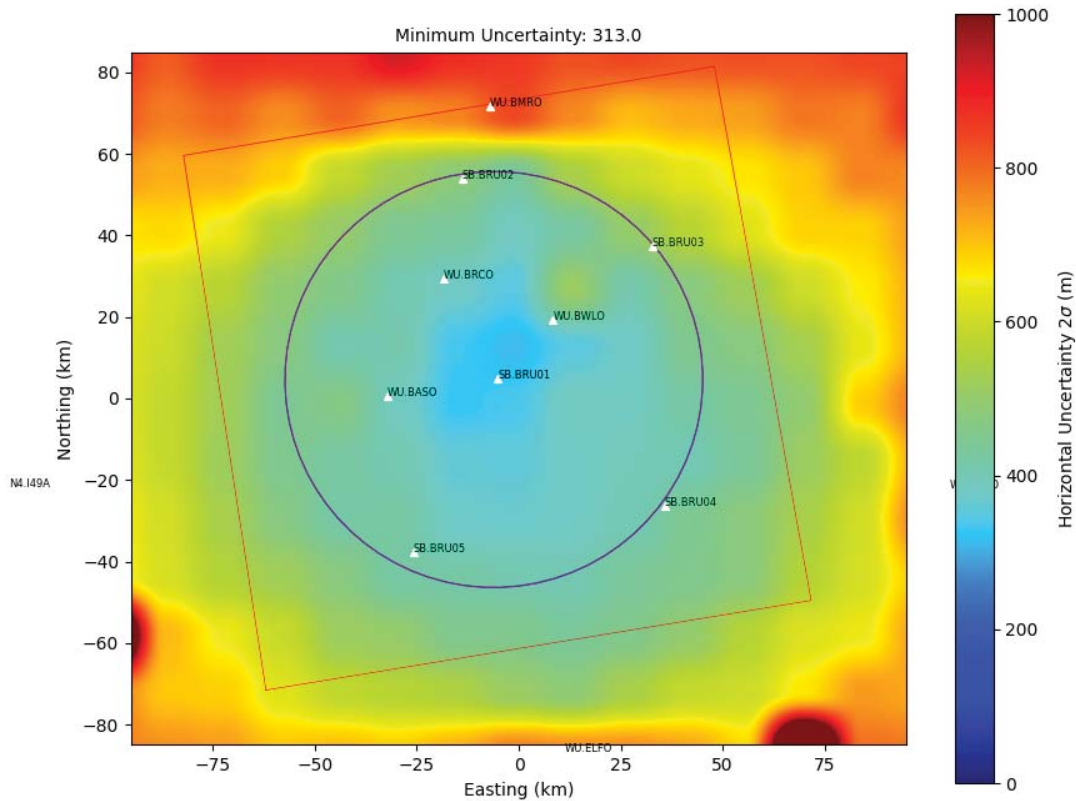
In this section, the location accuracy of earthquakes within the AOI is investigated using synthetic events, in order to understand the effect of the velocity model complexity and the network density on the event location uncertainty. To this end, a number of distributed synthetic hypocenters with a specified depth and spacing are simulated. Travel time grids are generated for the velocity model using the Eikonal finite-difference method (Podvin et al., 1991). For each simulated event, synthetic P and S first arrivals with Gaussian-distributed timing errors are computed.

Simulated events are then located using a grid search algorithm to determine hypocentral probability density functions and maximum likelihood locations. The probability density function for each event accounts for P and S pick time uncertainties and an overall travel time uncertainty. Location uncertainty,  $\sigma$ , is calculated as the standard deviation of the hypocenter probability distribution for horizontal and vertical direction.

The 3D velocity model is used to model the location accuracy, considering all 12 stations (5 NWMO stations and 7 public stations). A timing error of 120 ms is assumed in this assessment. Figure 10 shows the modeled horizontal uncertainty of events detected by the monitoring network within the AOI. This is applicable for events which are well recorded by most stations. Overall, the vertical uncertainty is expected to be higher than the horizontal uncertainty due to its higher sensitivity to the station proximity.

Accuracy event hypocenter locations depends on two key factors:

- i. Azimuthal coverage and number of stations at which the timing of phase arrivals are identified accurately, and
- ii. The compatibility of the velocity model used for locating events



**Figure 10.** Modeled horizontal location uncertainty of events within the AOI

## 9. Magnitude of Completeness

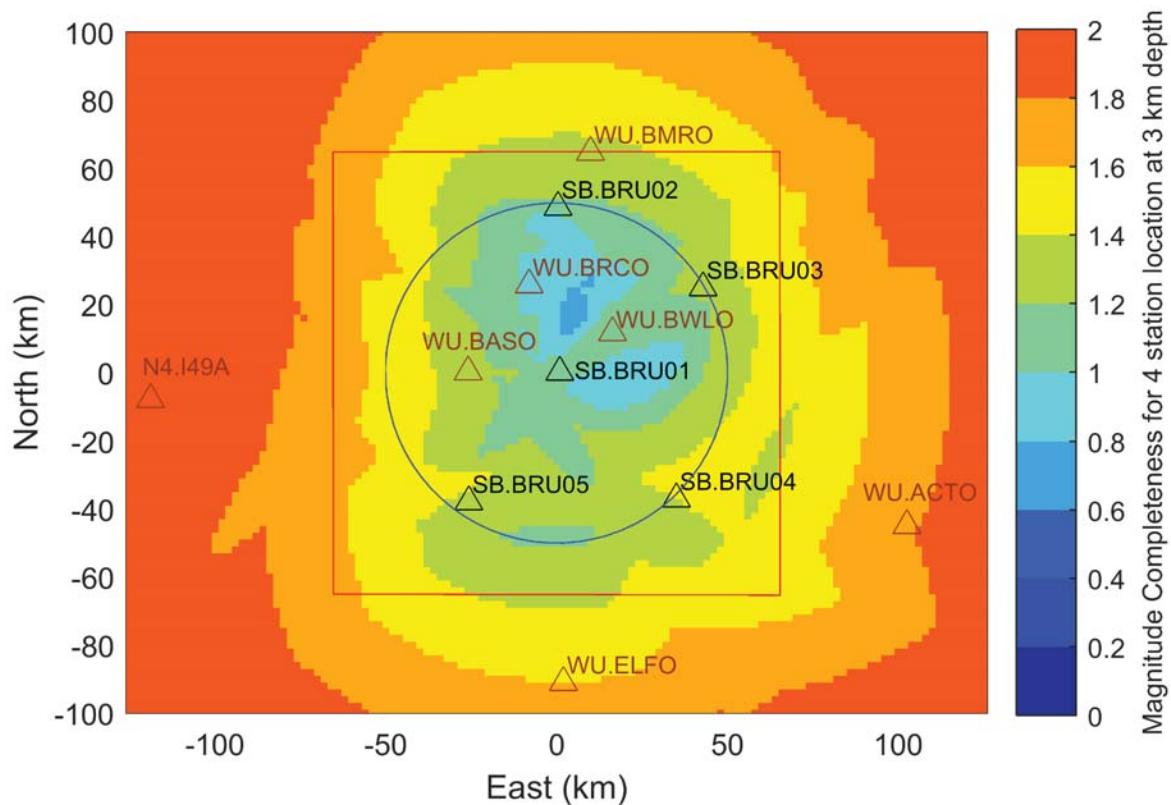
Magnitude of completeness (“Mc”) within the AOI is modeled for the NWMO South Bruce network to understand the minimum magnitude above which all seismic events can be detected and located, given the current array geometry and the assumed velocity model, instrument noise floors, background noise model, and attenuation parameters. For an assumed event depth, Mc modeling measures the spectral amplitude levels at different stations following a waveform propagation modeling, taking into account seismic attenuation attributes and assuming a point-source model (Brune, 1970). This is performed

[nanometrics.ca](http://nanometrics.ca)

3001 Solandt Rd, Kanata, Ontario, Canada K2K 2M8

**Tel** +1 613 592 6776 | **Toll Free** 1 855 792 6776 (NA) | **Fax** +1 613 592 5929

for a large number of synthetic events with variable magnitudes across a gridded space. The event signal to noise ratios ("SNR") are measured at monitoring stations for each grid point, considering the mean noise level at each station of the network. The  $M_c$  at a grid point is determined as the minimum magnitude at which the estimated SNR on at least four stations satisfies a pre-set detectability threshold. Figure 11 shows the spatial variation of  $M_c$  within the AOI for the NWMO South Bruce network. All seismic events down to magnitude of  $\sim M1.0$ , on average, are expected to be detected by the array. Smaller earthquakes may still be detected and located but with a lower accuracy and completeness.



**Figure 11.** Magnitude of completeness ( $M_c$ ) model of the NWMO South Bruce network for events at a depth of 6 km. Blue circle represents the microseismic monitoring boundary (50 km radius around the South Bruce Site) and the red square shows NWMO South Bruce AOI.

Black triangles represent locations of NWMO South Bruce stations and brown triangles indicate the locations of public stations included in the Program.

## 10. Data Delivery

Nanometrics has delivered the monitoring data obtained from January 2023 to December 2023. The data has been uploaded to an SFTP server along with metadata, a data transmittal letter and the Annual Seismic Monitoring Report. The delivered data includes:

1. A catalog of earthquakes and quarry blasts detected within the AOI (event origin date and time, hypocenter location, magnitude, location error ellipses etc.)
2. Seismic phase pick information in JSON-formatted files
3. Event waveform data in miniSEED formatted files
4. Continuous raw waveforms delivered in form of 1-hour long miniSEED files for each station and channel

## 11. Summary

Nanometrics operates a seismic monitoring network in the South Bruce Site on behalf of NWMO, as part of the Microseismic Monitoring Program ("Program"). An annual overview of network operation activities and observed seismic activities are presented in this report.

The monitoring network consists of five broadband seismograph stations within the AOI. The first station was installed on July 7th, 2021 and the remaining four stations were installed in November 2021 after the completion of site surveys and permitting. Seven additional public stations located around the AOI are also incorporated into the Program.

All stations stream data to the Nanometrics Data Center in the cloud in near real time. The acquired data are processed using an automatic event detection algorithm. The automatic processing system declares an event when a minimum of four time-correlated seismic phase arrivals are picked at a minimum of four stations. Event waveforms are reviewed by experienced analysts to identify those associated with seismic activities. A 3D velocity model was used for locating events. A modeling of event location accuracy indicated that the events detected within the AOI are estimated to have a minimum horizontal location uncertainty of ~330 m. Overall, the vertical uncertainty is expected to be higher than the horizontal uncertainty due to its higher sensitivity to the station proximity

[nanometrics.ca](https://nanometrics.ca)

3001 Solandt Rd, Kanata, Ontario, Canada K2K 2M8

**Tel** +1 613 592 6776 | **Toll Free** 1 855 792 6776 (NA) | **Fax** +1 613 592 5929

From January 1st, 2023 to December 31st, 2023, a total of 52132 automatic events were detected by the monitoring networks. The vast majority of these events were either false positives (incorrect classification of random noise) or anthropogenic activities (e.g., mining/quarry blasts) occurring outside the AOI. As a result of manual reviews, 6 events with local magnitudes ranging from 0.77ML to 1.156ML were identified within the AOI. These events attained depths ranging from -0.50 km to 1.30 km relative to mean sea level.

Magnitude of completeness ( $M_c$ ) within the AOI is modeled for the NWMO network to understand the minimum magnitude above which all seismic events can be detected. This assessment suggests that earthquakes of magnitude  $M > 1.0$  within the AOI are expected to be detected by the array. Smaller earthquakes may still be detected and located but with a lower accuracy and completeness.



## 12. References

- Brune, J. N. 1970. Tectonic stress and the spectra of seismic shear waves from earthquakes, *J. Geophys. Res.*, 75( 26), 4997– 5009, doi:10.1029/JB075i026p04997.
- Carter, T.R., Brunton, F.R., Clark, J.K., Fortner, L., Freckelton, C., Logan, C.E., Russell, H.A.J., Somers, M., Sutherland, L., and Yeung, K.H. 2019. A Three-Dimensional Geological Model of the Paleozoic Bedrock of Southern Ontario, Groundwater Resources Study 19, Geological Survey of Canada, Open File 8618.
- Carter, T., Fortner, L., Russell, H., Skuce, M., Longstaffe, F. & Sun, S. 2021. A Hydrostratigraphic Framework for the Paleozoic Bedrock of Southern Ontario. *Geoscience Canada*, 48(1), 23–58. <https://doi.org/10.12789/geocanj.2021.48.172>
- Earthquakes Canada, GSC, Earthquake Search (On-line Bulletin), <http://earthquakescanada.nrcan.gc.ca/stndon/NEDB-BNDS/bulletin-en.php>, Nat. Res. Can., Canadian Hazards Information Service, 2024-01-24.
- Environment and Natural Resources, Historical Climate Data, [https://climate.weather.gc.ca/historical\\_data/search\\_historic\\_data\\_e.html](https://climate.weather.gc.ca/historical_data/search_historic_data_e.html), 2024-01-23
- Hutton, L. K. and Boore, D. M. 1987. The ML scale in southern California, *Bull. Seismol. Soc. Am.* 77, 2074-2094.
- Pascal Podvin, Isabelle Lecomte, Finite difference computation of traveltimes in very contrasted velocity models: a massively parallel approach and its associated tools, *Geophysical Journal International*, Volume 105, Issue 1, April 1991, Pages 271–284, <https://doi.org/10.1111/j.1365-246X.1991.tb03461.x>
- Somers, M.R., Fortner, L., Carter, T.R. and Clark, J. 2017. A revised digital map of the Paleozoic bedrock geology of southern Ontario; Oil, Gas and Salt Resources Library, Open File Data Release.

## Appendix A: Daily Station Data Availability

### January 2023

Station	2023-01-01	2023-01-02	2023-01-03	2023-01-04	2023-01-05	2023-01-06	2023-01-07
SB.BRU01	100	100	100	100	100	100	100
SB.BRU02	100	100	100	100	100	100	100
SB.BRU03	100	100	100	100	100	100	100
SB.BRU04	100	100	100	100	100	100	100
SB.BRU05	100	100	100	100	100	100	100
	2023-01-08	2023-01-09	2023-01-10	2023-01-11	2023-01-12	2023-01-13	2023-01-14
SB.BRU01	100	100	100	100	100	100	100
SB.BRU02	100	100	100	100	100	100	100
SB.BRU03	100	100	100	100	100	100	100
SB.BRU04	100	100	100	100	100	100	100
SB.BRU05	100	100	100	100	100	100	100
	2023-01-15	2023-01-16	2023-01-17	2023-01-18	2023-01-19	2023-01-20	2023-01-21
SB.BRU01	100	100	100	100	100	100	100
SB.BRU02	100	100	100	100	100	100	100
SB.BRU03	100	100	100	100	100	100	100
SB.BRU04	100	100	100	100	100	100	100
SB.BRU05	100	100	100	100	100	100	100
	2023-01-22	2023-01-23	2023-01-24	2023-01-25	2023-01-26	2023-01-27	2023-01-28
SB.BRU01	100	100	100	100	100	100	100
SB.BRU02	100	100	100	100	100	100	100
SB.BRU03	100	100	100	100	100	100	100
SB.BRU04	100	100	100	100	100	100	100
SB.BRU05	100	100	100	100	100	100	100
	2023-01-29	2023-01-30	2023-01-31				
SB.BRU01	100	100	100				
SB.BRU02	100	100	100				
SB.BRU03	100	100	100				



SB.BRU04	100	100	100				
SB.BRU05	100	100	100				

## February 2023

Station	2023-02-01	2023-02-02	2023-02-03	2023-02-04	2023-02-05	2023-02-06	2023-02-07
SB.BRU01	100	100	100	100	100	100	100
SB.BRU02	100	100	100	100	100	100	100
SB.BRU03	100	100	100	100	100	100	100
SB.BRU04	100	100	100	100	100	100	100
SB.BRU05	100	100	100	100	100	100	100
	2023-02-08	2023-02-09	2023-02-10	2023-02-11	2023-02-12	2023-02-13	2023-02-14
SB.BRU01	100	100	100	100	100	100	100
SB.BRU02	100	100	100	100	100	100	100
SB.BRU03	100	100	100	100	100	100	100
SB.BRU04	100	100	100	100	100	100	100
SB.BRU05	100	100	100	100	100	100	100
	2023-02-15	2023-02-16	2023-02-17	2023-02-18	2023-02-19	2023-02-20	2023-02-21
SB.BRU01	100	100	100	100	100	100	100
SB.BRU02	100	100	100	100	100	100	100
SB.BRU03	100	100	100	100	100	100	100
SB.BRU04	100	100	100	100	100	100	100
SB.BRU05	100	100	100	100	100	100	100
	2023-02-22	2023-02-23	2023-02-24	2023-02-25	2023-02-26	2023-02-27	2023-02-28
SB.BRU01	100	100	100	100	100	100	100
SB.BRU02	100	100	100	100	100	100	100
SB.BRU03	100	100	100	100	100	100	100
SB.BRU04	100	100	100	100	100	100	100
SB.BRU05	100	100	100	100	100	100	100

## March 2023

Station	2023-03-01	2023-03-02	2023-03-03	2023-03-04	2023-03-05	2023-03-06	2023-03-07
SB.BRU01	100	100	100	100	100	100	100
SB.BRU02	100	100	100	100	100	100	100
SB.BRU03	100	100	100	100	100	100	100
SB.BRU04	100	100	100	100	100	100	100
SB.BRU05	100	100	100	100	100	100	100
	2023-03-08	2023-03-09	2023-03-10	2023-03-11	2023-03-12	2023-03-13	2023-03-14
SB.BRU01	100	100	100	100	100	100	100
SB.BRU02	100	100	100	100	100	100	100
SB.BRU03	100	100	100	100	100	100	100
SB.BRU04	100	100	100	100	100	100	100
SB.BRU05	100	100	100	100	100	100	100
	2023-03-15	2023-03-16	2023-03-17	2023-03-18	2023-03-19	2023-03-20	2023-03-21
SB.BRU01	100	100	100	100	100	100	100
SB.BRU02	100	100	100	100	100	100	100
SB.BRU03	100	100	100	100	100	100	100
SB.BRU04	100	100	100	100	100	100	100
SB.BRU05	100	100	100	100	100	100	100
	2023-03-22	2023-03-23	2023-03-24	2023-03-25	2023-03-26	2023-03-27	2023-03-28
SB.BRU01	100	100	100	100	100	100	100
SB.BRU02	100	100	100	100	100	100	100
SB.BRU03	100	100	100	100	100	100	100
SB.BRU04	100	100	100	100	100	100	100
SB.BRU05	100	100	100	100	100	100	100
	2023-03-29	2023-03-30	2023-03-31				
SB.BRU01	100	100	100				
SB.BRU02	100	100	100				
SB.BRU03	100	100	100				
SB.BRU04	100	100	100				

SB.BRU05	100	100	100				
----------	-----	-----	-----	--	--	--	--

## April 2023

Station	2023-04-01	2023-04-02	2023-04-03	2023-04-04	2023-04-05	2023-04-06	2023-04-07
SB.BRU01	100	100	100	100	100	100	100
SB.BRU02	100	100	100	100	100	100	100
SB.BRU03	100	100	100	100	100	100	100
SB.BRU04	100	100	100	100	100	100	100
SB.BRU05	100	100	100	100	100	100	100
	2023-04-08	2023-04-09	2023-04-10	2023-04-11	2023-04-12	2023-04-13	2023-04-14
SB.BRU01	100	100	100	100	100	100	100
SB.BRU02	100	100	100	100	100	100	100
SB.BRU03	100	100	100	100	100	100	100
SB.BRU04	100	100	100	100	100	100	100
SB.BRU05	100	100	100	100	100	100	100
	2023-04-15	2023-04-16	2023-04-17	2023-04-18	2023-04-19	2023-04-20	2023-04-21
SB.BRU01	100	100	100	100	100	100	100
SB.BRU02	100	100	100	100	100	100	100
SB.BRU03	100	100	100	100	100	100	100
SB.BRU04	100	100	100	100	100	100	100
SB.BRU05	100	100	100	100	100	100	100
	2023-04-22	2023-04-23	2023-04-24	2023-04-25	2023-04-26	2023-04-27	2023-04-28
SB.BRU01	100	100	100	100	100	100	100
SB.BRU02	100	100	100	100	100	100	100
SB.BRU03	100	100	100	100	100	100	100
SB.BRU04	100	100	100	100	100	100	100
SB.BRU05	100	100	100	100	100	100	100
	2023-04-29	2023-04-30					
SB.BRU01	100	100					
SB.BRU02	100	100					

SB.BRU03	100	100					
SB.BRU04	100	100					
SB.BRU05	100	100					

## May 2023

Station	2023-05-01	2023-05-02	2023-05-03	2023-05-04	2023-05-05	2023-05-06	2023-05-07
SB.BRU01	100	100	100	100	100	100	100
SB.BRU02	100	100	100	100	100	100	100
SB.BRU03	100	100	100	100	100	100	100
SB.BRU04	100	100	100	100	100	100	100
SB.BRU05	100	100	100	100	100	100	100
	2023-05-08	2023-05-09	2023-05-10	2023-05-11	2023-05-12	2023-05-13	2023-05-14
SB.BRU01	100	100	100	100	100	100	100
SB.BRU02	100	100	100	100	100	100	100
SB.BRU03	100	100	100	100	100	100	100
SB.BRU04	100	100	100	100	100	100	100
SB.BRU05	100	100	100	100	100	100	100
	2023-05-15	2023-05-16	2023-05-17	2023-05-18	2023-05-19	2023-05-20	2023-05-21
SB.BRU01	100	100	100	100	100	100	100
SB.BRU02	100	100	100	100	100	100	100
SB.BRU03	100	100	100	100	100	100	100
SB.BRU04	100	100	100	100	100	100	100
SB.BRU05	100	100	100	100	100	100	100
	2023-05-22	2023-05-23	2023-05-24	2023-05-25	2023-05-26	2023-05-27	2023-05-28
SB.BRU01	100	100	100	100	100	100	100
SB.BRU02	100	100	100	100	100	100	100
SB.BRU03	100	100	100	100	100	100	100
SB.BRU04	100	100	100	100	100	100	100
SB.BRU05	100	100	100	100	100	100	100
	2023-05-29	2023-05-30	2023-05-31				

SB.BRU01	100	100	100				
SB.BRU02	100	100	100				
SB.BRU03	100	100	100				
SB.BRU04	100	100	100				
SB.BRU05	100	100	100				

## June 2023

Station	2023-06-01	2023-06-02	2023-06-03	2023-06-04	2023-06-05	2023-06-06	2023-06-07
SB.BRU01	100	100	100	100	100	100	100
SB.BRU02	100	100	100	100	100	100	100
SB.BRU03	100	100	100	100	100	100	100
SB.BRU04	100	100	100	100	100	100	100
SB.BRU05	100	100	100	100	100	100	100
	2023-06-08	2023-06-09	2023-06-10	2023-06-11	2023-06-12	2023-06-13	2023-06-14
SB.BRU01	100	100	100	100	100	100	100
SB.BRU02	100	100	100	100	100	100	100
SB.BRU03	100	100	100	100	100	100	100
SB.BRU04	100	100	100	100	100	100	100
SB.BRU05	100	100	100	100	100	100	100
	2023-06-15	2023-06-16	2023-06-17	2023-06-18	2023-06-19	2023-06-20	2023-06-21
SB.BRU01	100	100	100	100	100	100	100
SB.BRU02	100	100	100	100	100	100	100
SB.BRU03	100	100	100	100	100	100	100
SB.BRU04	100	100	100	100	100	100	100
SB.BRU05	100	100	100	100	100	100	100
	2023-06-22	2023-06-23	2023-06-24	2023-06-25	2023-06-26	2023-06-27	2023-06-28
SB.BRU01	100	100	100	100	100	100	100
SB.BRU02	100	100	100	100	100	100	100
SB.BRU03	100	100	100	100	100	100	100
SB.BRU04	100	100	100	100	100	100	100

SB.BRU05	100	100	100	100	100	100	100
	<b>2023-06-29</b>	<b>2023-06-30</b>					
SB.BRU01	100	100					
SB.BRU02	100	100					
SB.BRU03	100	100					
SB.BRU04	100	100					
SB.BRU05	100	100					

## July 2023

Station	<b>2023-07-01</b>	<b>2023-07-02</b>	<b>2023-07-03</b>	<b>2023-07-04</b>	<b>2023-07-05</b>	<b>2023-07-06</b>	<b>2023-07-07</b>
SB.BRU01	100	100	100	100	100	100	100
SB.BRU02	100	100	100	100	100	100	100
SB.BRU03	100	100	100	100	100	100	100
SB.BRU04	100	100	100	100	100	100	100
SB.BRU05	100	100	100	100	100	100	100
	<b>2023-07-08</b>	<b>2023-07-09</b>	<b>2023-07-10</b>	<b>2023-07-11</b>	<b>2023-07-12</b>	<b>2023-07-13</b>	<b>2023-07-14</b>
SB.BRU01	100	100	100	100	100	100	100
SB.BRU02	100	100	100	100	100	100	100
SB.BRU03	100	100	100	100	100	100	100
SB.BRU04	100	100	100	100	100	100	100
SB.BRU05	100	100	100	100	100	100	100
	<b>2023-07-15</b>	<b>2023-07-16</b>	<b>2023-07-17</b>	<b>2023-07-18</b>	<b>2023-07-19</b>	<b>2023-07-20</b>	<b>2023-07-21</b>
SB.BRU01	100	100	100	100	100	100	100
SB.BRU02	100	100	100	100	100	100	100
SB.BRU03	100	100	100	100	100	100	100
SB.BRU04	100	100	100	100	100	100	100
SB.BRU05	100	100	100	100	100	100	100
	<b>2023-07-22</b>	<b>2023-07-23</b>	<b>2023-07-24</b>	<b>2023-07-25</b>	<b>2023-07-26</b>	<b>2023-07-27</b>	<b>2023-07-28</b>
SB.BRU01	100	100	100	100	100	100	100
SB.BRU02	100	100	100	100	100	100	100

SB.BRU03	100	100	100	100	100	100	100
SB.BRU04	100	100	100	100	100	100	100
SB.BRU05	100	100	100	100	100	100	100
	<b>2023-07-29</b>	<b>2023-07-30</b>	<b>2023-07-31</b>				
SB.BRU01	100	100	100				
SB.BRU02	100	100	100				
SB.BRU03	100	100	100				
SB.BRU04	100	100	100				
SB.BRU05	100	100	100				

### August 2023

Station	<b>2023-08-01</b>	<b>2023-08-02</b>	<b>2023-08-03</b>	<b>2023-08-04</b>	<b>2023-08-05</b>	<b>2023-08-06</b>	<b>2023-08-07</b>
SB.BRU01	100	100	100	100	100	100	100
SB.BRU02	100	100	100	100	100	100	100
SB.BRU03	100	100	100	100	100	100	100
SB.BRU04	100	100	100	100	100	100	100
SB.BRU05	100	100	100	100	100	100	100
	<b>2023-08-08</b>	<b>2023-08-09</b>	<b>2023-08-10</b>	<b>2023-08-11</b>	<b>2023-08-12</b>	<b>2023-08-13</b>	<b>2023-08-14</b>
SB.BRU01	100	100	100	100	100	100	100
SB.BRU02	100	100	100	100	100	100	100
SB.BRU03	100	100	100	100	100	100	100
SB.BRU04	100	100	100	100	100	100	100
SB.BRU05	100	100	100	100	100	100	100
	<b>2023-08-15</b>	<b>2023-08-16</b>	<b>2023-08-17</b>	<b>2023-08-18</b>	<b>2023-08-19</b>	<b>2023-08-20</b>	<b>2023-08-21</b>
SB.BRU01	100	100	100	100	100	100	100
SB.BRU02	100	100	100	100	100	100	100
SB.BRU03	100	100	100	100	100	100	100
SB.BRU04	100	100	100	100	100	100	100
SB.BRU05	100	100	100	100	100	100	100

	2023-08-22	2023-08-23	2023-08-24	2023-08-25	2023-08-26	2023-08-27	2023-08-28
SB.BRU01	100	100	100	100	100	100	100
SB.BRU02	100	100	100	100	100	100	100
SB.BRU03	100	100	100	100	100	100	100
SB.BRU04	100	100	100	100	100	100	100
SB.BRU05	100	100	100	100	100	100	100
	2023-08-29	2023-08-30	2023-08-31				
SB.BRU01	100	100	100				
SB.BRU02	100	100	100				
SB.BRU03	100	100	100				
SB.BRU04	100	100	100				
SB.BRU05	100	100	100				

## September 2023

Station	2023-09-01	2023-09-02	2023-09-03	2023-09-04	2023-09-05	2023-09-06	2023-09-07
SB.BRU01	100	100	100	100	100	100	100
SB.BRU02	100	100	100	100	100	100	100
SB.BRU03	100	100	100	100	100	100	100
SB.BRU04	100	100	100	100	100	100	100
SB.BRU05	100	100	100	100	100	100	100
	2023-09-08	2023-09-09	2023-09-10	2023-09-11	2023-09-12	2023-09-13	2023-09-14
SB.BRU01	100	100	100	100	100	100	100
SB.BRU02	100	100	100	100	100	100	100
SB.BRU03	100	100	100	100	100	100	100
SB.BRU04	100	100	100	100	100	100	100
SB.BRU05	100	100	100	100	100	100	100



	2023-09-15	2023-09-16	2023-09-17	2023-09-18	2023-09-19	2023-09-20	2023-09-21
SB.BRU01	100	100	100	100	100	100	100
SB.BRU02	100	100	100	100	100	100	100
SB.BRU03	100	100	100	100	100	100	100
SB.BRU04	100	100	100	100	100	100	100
SB.BRU05	100	100	100	100	100	100	100
	2023-09-22	2023-09-23	2023-09-24	2023-09-25	2023-09-26	2023-09-27	2023-09-28
SB.BRU01	100	100	100	100	100	100	100
SB.BRU02	100	100	100	100	100	100	100
SB.BRU03	100	100	100	100	100	100	100
SB.BRU04	100	100	100	100	100	100	100
SB.BRU05	100	100	100	100	100	100	100
	2023-09-29	2023-09-30					
SB.BRU01	99.9	100					
SB.BRU02	99.9	100					
SB.BRU03	99.9	100					
SB.BRU04	99.8	100					
SB.BRU05	99	100					

## October 2023

Station	2023-10-01	2023-10-02	2023-10-03	2023-10-04	2023-10-05	2023-10-06	2023-10-07
SB.BRU01	100	100	100	100	100	100	100
SB.BRU02	100	100	100	100	100	100	100
SB.BRU03	100	100	100	100	100	100	100
SB.BRU04	100	100	100	100	100	100	100
SB.BRU05	100	100	100	100	100	100	100

[nanometrics.ca](https://nanometrics.ca)

3001 Solandt Rd, Kanata, Ontario, Canada K2K 2M8

**Tel** +1 613 592 6776 | **Toll Free** 1 855 792 6776 (NA) | **Fax** +1 613 592 5929

	2023-10-08	2023-10-09	2023-10-10	2023-10-11	2023-10-12	2023-10-13	2023-10-14
SB.BRU01	100	100	100	100	100	100	100
SB.BRU02	100	100	100	100	100	100	100
SB.BRU03	100	100	100	100	100	100	100
SB.BRU04	100	100	100	100	100	100	100
SB.BRU05	100	100	100	100	100	100	100
	2023-10-15	2023-10-16	2023-10-17	2023-10-18	2023-10-19	2023-10-20	2023-10-21
SB.BRU01	100	100	100	100	100	100	100
SB.BRU02	100	100	100	100	100	100	100
SB.BRU03	100	100	100	100	100	100	100
SB.BRU04	100	100	100	100	100	100	100
SB.BRU05	100	100	100	100	100	100	100
	2023-10-22	2023-10-23	2023-10-24	2023-10-25	2023-10-26	2023-10-27	2023-10-28
SB.BRU01	100	100	100	100	100	100	100
SB.BRU02	100	100	100	100	100	100	100
SB.BRU03	100	100	100	100	100	100	100
SB.BRU04	100	100	100	100	100	100	100
SB.BRU05	100	100	100	100	100	100	100
	2023-10-29	2023-10-30	2023-10-31				
SB.BRU01	100	100	100				
SB.BRU02	100	100	100				
SB.BRU03	100	100	100				
SB.BRU04	100	100	100				
SB.BRU05	100	100	100				

## November 2023

Station	2023-11-01	2023-11-02	2023-11-03	2023-11-04	2023-11-05	2023-11-06	2023-11-07
SB.BRU01	100	100	100	100	100	100	100
SB.BRU02	100	100	100	100	100	100	100
SB.BRU03	100	100	100	100	100	100	100

[nanometrics.ca](https://www.nanometrics.ca)

3001 Solandt Rd, Kanata, Ontario, Canada K2K 2M8

**Tel** +1 613 592 6776 | **Toll Free** 1 855 792 6776 (NA) | **Fax** +1 613 592 5929

SB.BRU04	100	100	100	100	100	100	100
SB.BRU05	100	100	100	100	100	100	100
	<b>2023-11-08</b>	<b>2023-11-09</b>	<b>2023-11-10</b>	<b>2023-11-11</b>	<b>2023-11-12</b>	<b>2023-11-13</b>	<b>2023-11-14</b>
SB.BRU01	100	100	100	100	100	100	100
SB.BRU02	100	100	100	100	100	100	100
SB.BRU03	100	100	100	100	100	100	100
SB.BRU04	100	100	100	100	100	100	100
SB.BRU05	100	100	100	100	100	100	100
	<b>2023-11-15</b>	<b>2023-11-16</b>	<b>2023-11-17</b>	<b>2023-11-18</b>	<b>2023-11-19</b>	<b>2023-11-20</b>	<b>2023-11-21</b>
SB.BRU01	100	100	100	100	100	100	100
SB.BRU02	100	100	100	100	100	100	100
SB.BRU03	100	100	100	100	100	100	100
SB.BRU04	100	100	100	100	100	100	100
SB.BRU05	100	100	100	100	100	100	100
	<b>2023-11-22</b>	<b>2023-11-23</b>	<b>2023-11-24</b>	<b>2023-11-25</b>	<b>2023-11-26</b>	<b>2023-11-27</b>	<b>2023-11-28</b>
SB.BRU01	100	100	100	100	100	100	100
SB.BRU02	100	100	100	100	100	100	100
SB.BRU03	100	100	100	100	100	100	100
SB.BRU04	100	100	100	100	100	100	100
SB.BRU05	100	100	100	100	100	100	100
	<b>2023-11-29</b>	<b>2023-11-30</b>					
SB.BRU01	100	100					
SB.BRU02	100	100					
SB.BRU03	100	100					
SB.BRU04	100	100					
SB.BRU05	100	100					

## December 2023

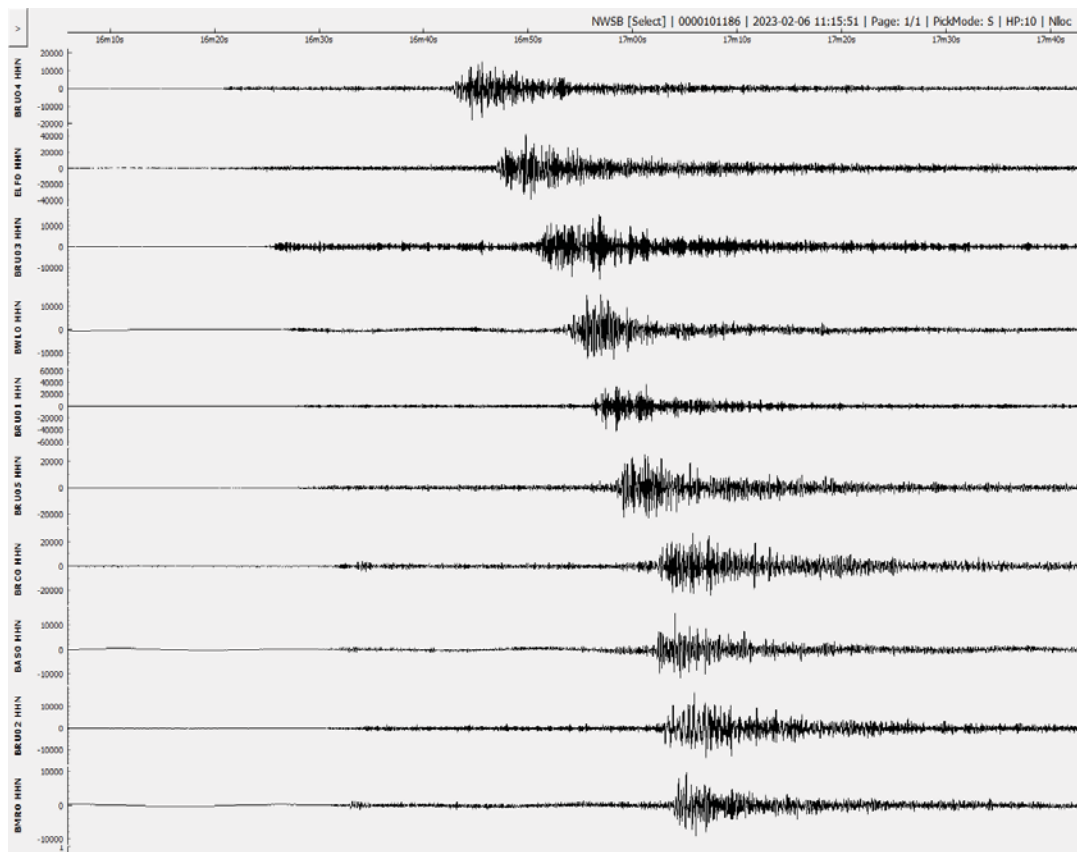
Station	2023-12-01	2023-12-02	2023-12-03	2023-12-04	2023-12-05	2023-12-06	2023-12-07
SB.BRU01	100	100	100	100	100	100	100
SB.BRU02	100	100	100	100	100	100	100
SB.BRU03	100	100	100	100	100	100	100
SB.BRU04	100	100	100	100	100	100	100
SB.BRU05	100	100	100	100	100	100	100
	2023-12-08	2023-12-09	2023-12-10	2023-12-11	2023-12-12	2023-12-13	2023-12-14
SB.BRU01	100	100	100	100	100	100	100
SB.BRU02	100	100	100	100	100	100	100
SB.BRU03	100	100	100	100	100	100	100
SB.BRU04	100	100	100	100	100	100	100
SB.BRU05	100	100	100	100	100	100	100
	2023-12-15	2023-12-16	2023-12-17	2023-12-18	2023-12-19	2023-12-20	2023-12-21
SB.BRU01	100	100	100	100	100	100	100
SB.BRU02	100	100	100	100	100	100	100
SB.BRU03	100	100	100	100	100	100	100
SB.BRU04	100	100	100	100	100	100	100
SB.BRU05	100	100	100	100	100	100	100
	2023-12-22	2023-12-23	2023-12-24	2023-12-25	2023-12-26	2023-12-27	2023-12-28
SB.BRU01	100	100	100	100	100	100	100
SB.BRU02	100	100	100	100	100	100	100
SB.BRU03	100	100	100	100	100	100	100
SB.BRU04	100	100	100	100	100	100	100
SB.BRU05	100	100	100	100	100	100	100
	2023-12-29	2023-12-30	2023-12-31				
SB.BRU01	100	100	100				
SB.BRU02	100	100	100				
SB.BRU03	100	100	100				
SB.BRU04	100	100	100				

SB.BRU05	100	100	100				
----------	-----	-----	-----	--	--	--	--

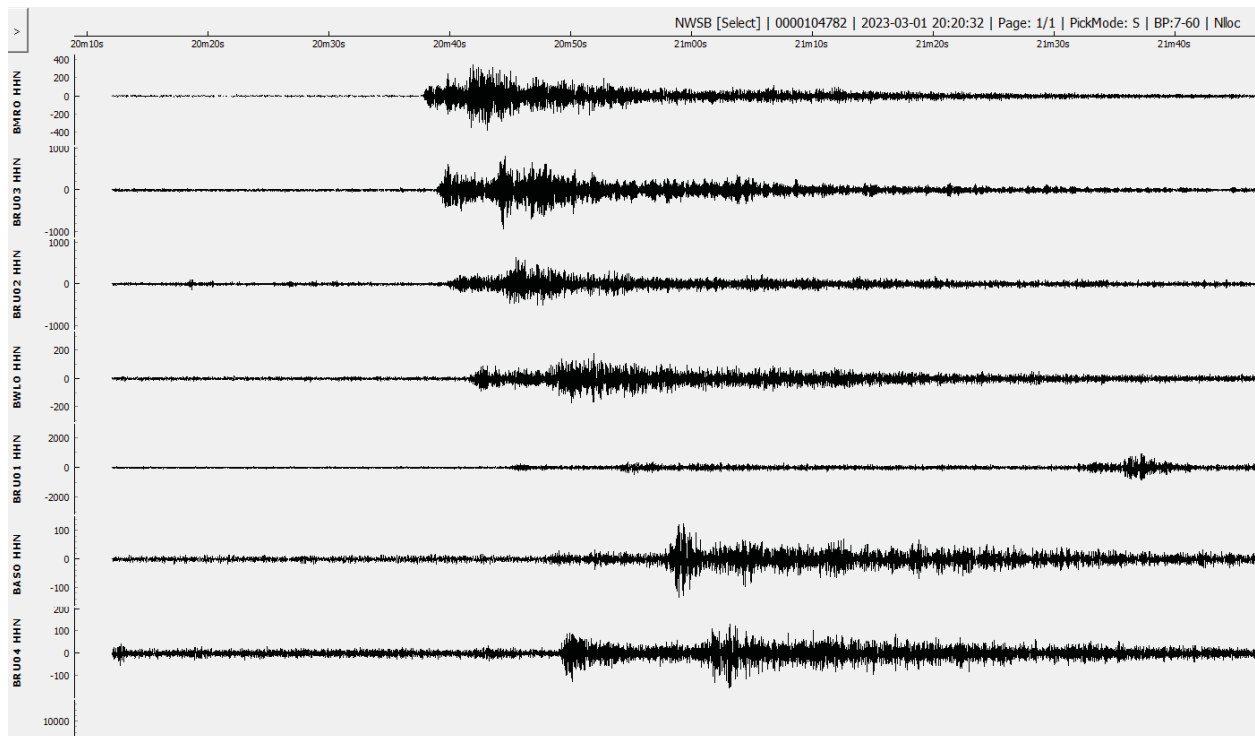
## Appendix B: Waveforms of Events Detected within the AOI

This section displays the waveforms of events detected within the AOI by the NWMO South Bruce monitoring network. Waveforms are filtered with a 10 Hz bandpass unless otherwise specified.

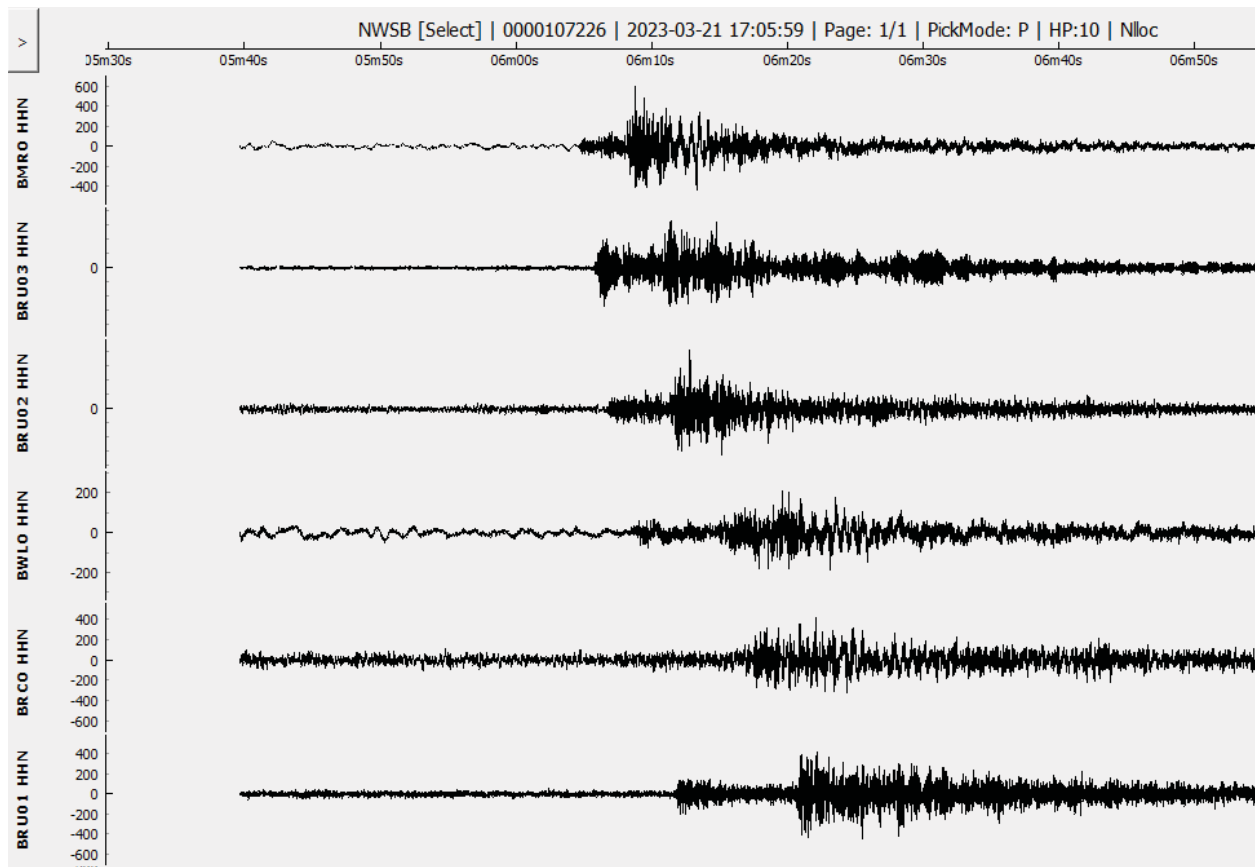
Date: 2023-02-06  
 Time: 11:15:51 UTC  
 Latitude: 43.0685°N  
 Longitude: 78.9243°W  
 Depth: 7.02 km  
 Magnitude: 4.55 MI  
 Tag: regional



Date: 2023-03-01  
 Time: 20:20:32 UTC  
 Latitude: 44.5985°N  
 Longitude: 80.7906°W  
 Depth: 1.30 km  
 Magnitude: 1.56 MI  
 Tag: quarry\_blast

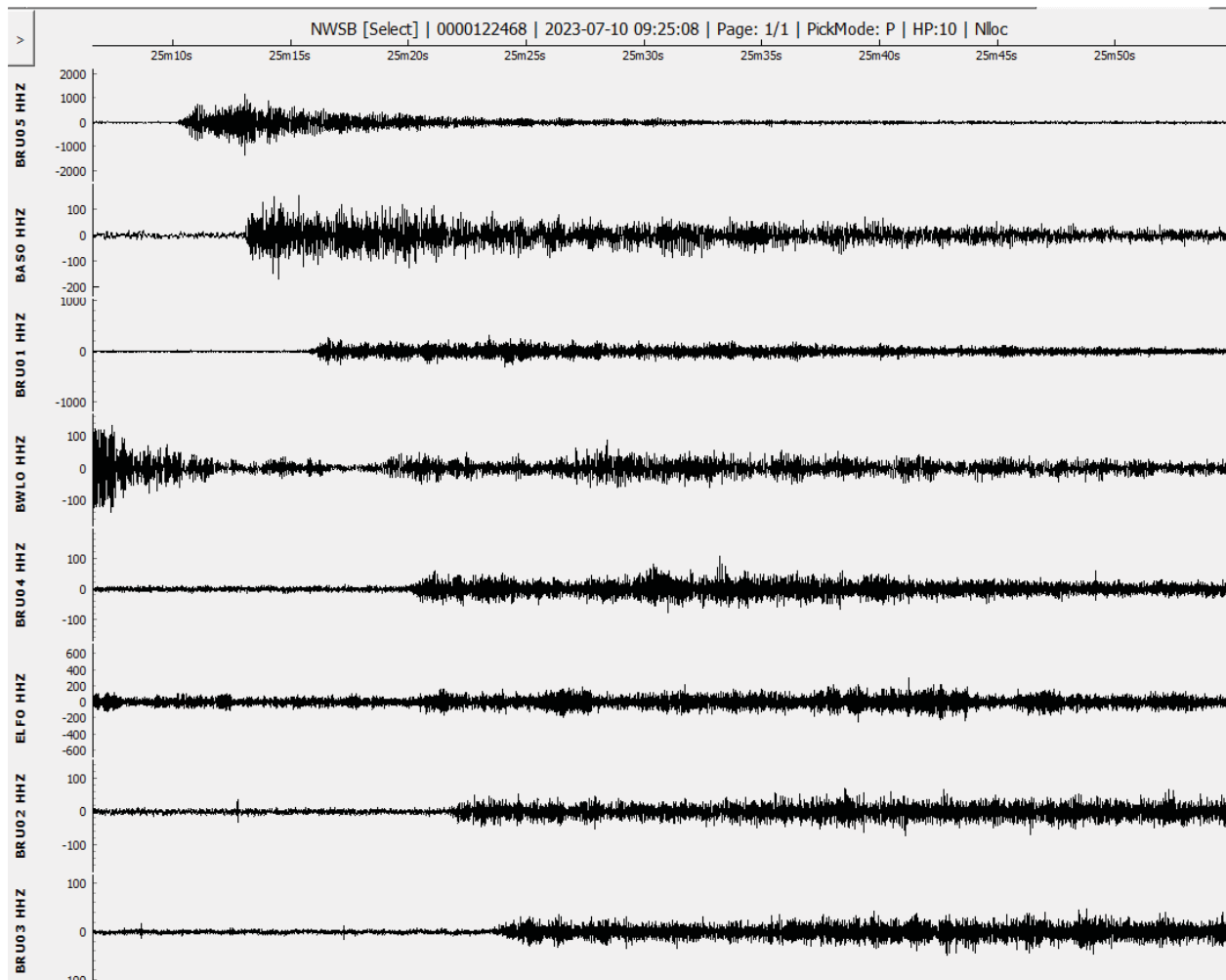


Date: 2023-03-21  
 Time: 17:05:59 UTC  
 Latitude: 44.5561°N  
 Longitude: 80.8435°W  
 Depth: 1.30km  
 Magnitude: 1.67 MI  
 Tag: quarry\_blast

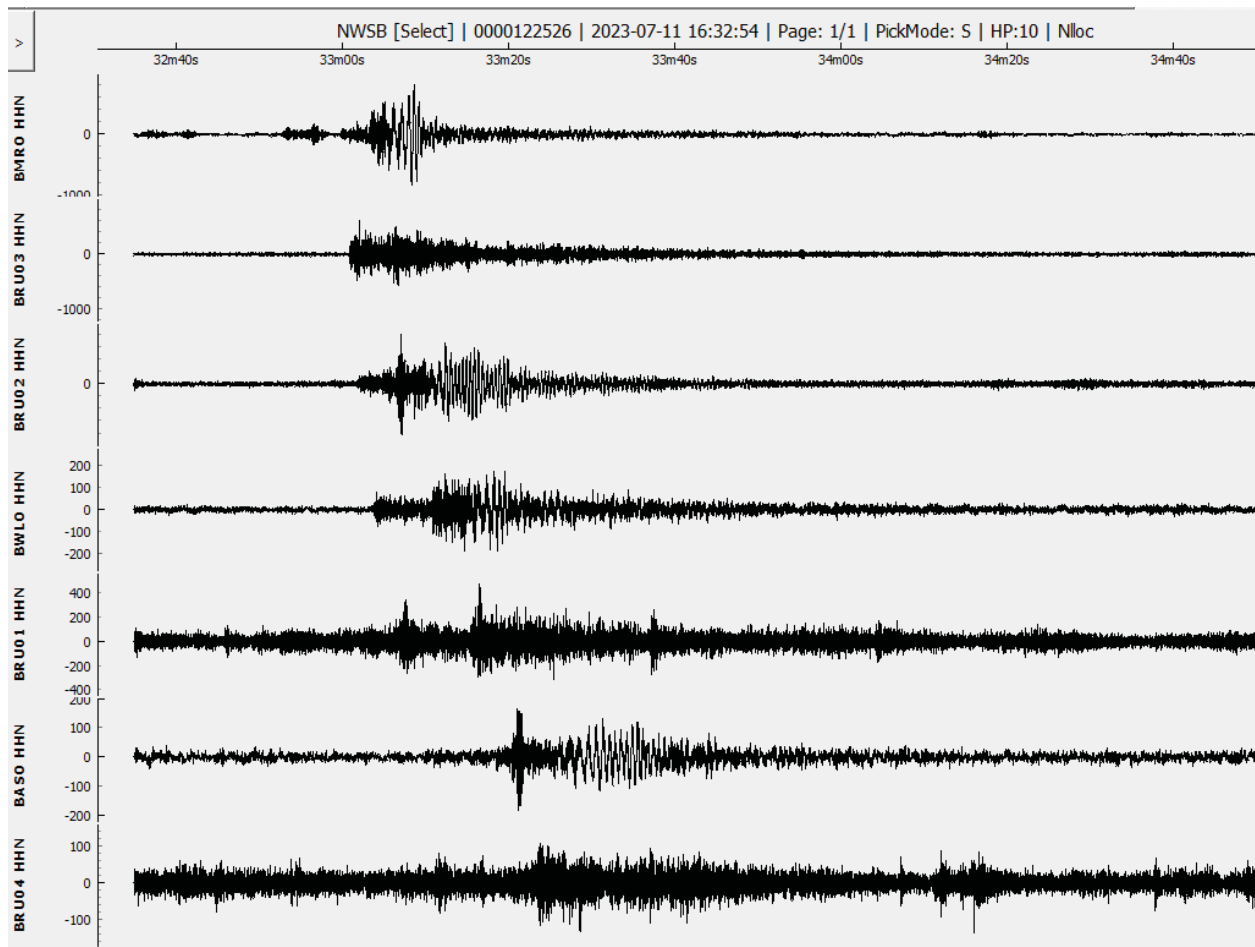




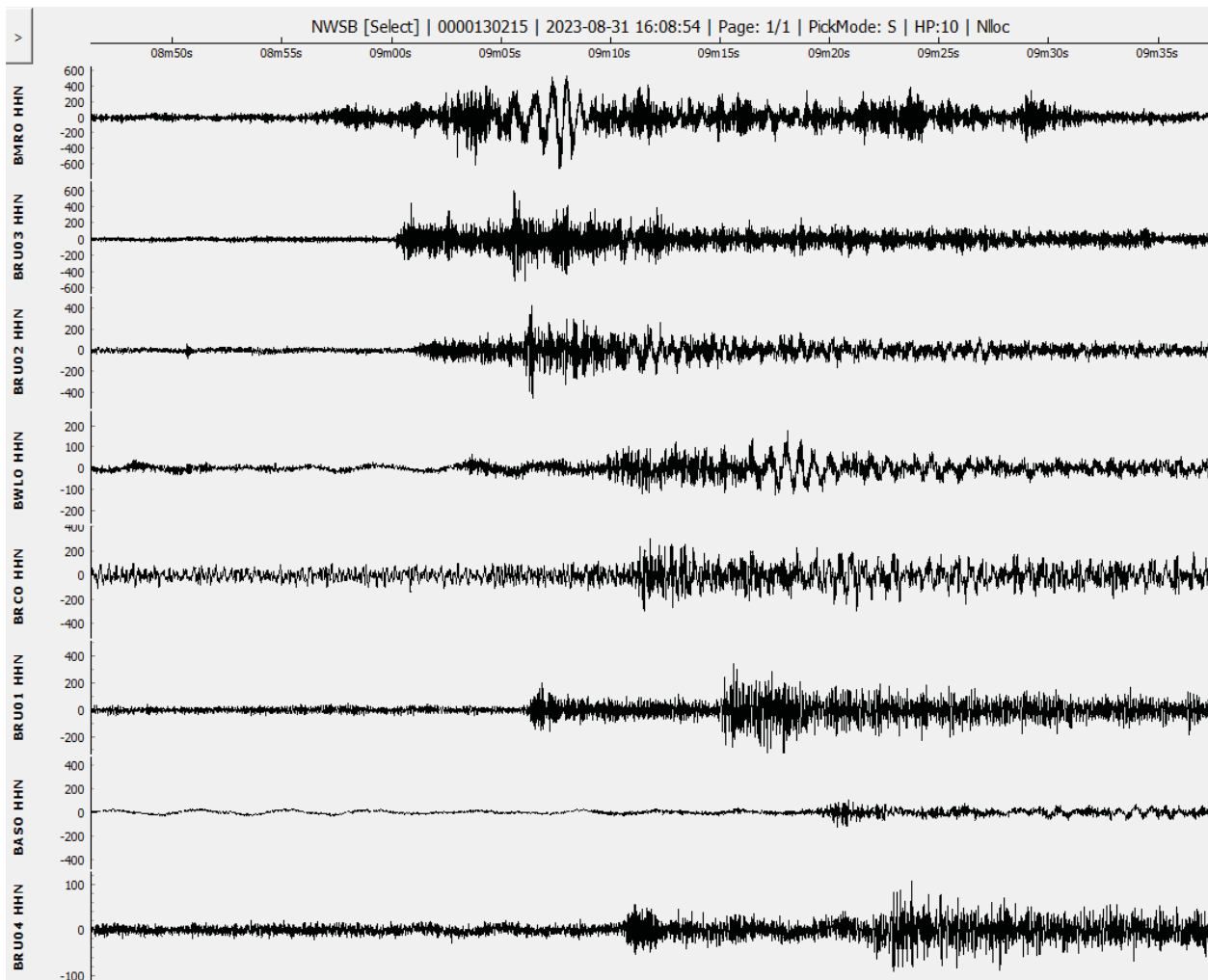
Date: 2023-07-10  
 Time: 09:25:08 UTC  
 Latitude: 43.7617°N  
 Longitude: 81.7504°W  
 Depth: -0.50 km  
 Magnitude: 0.77 MI



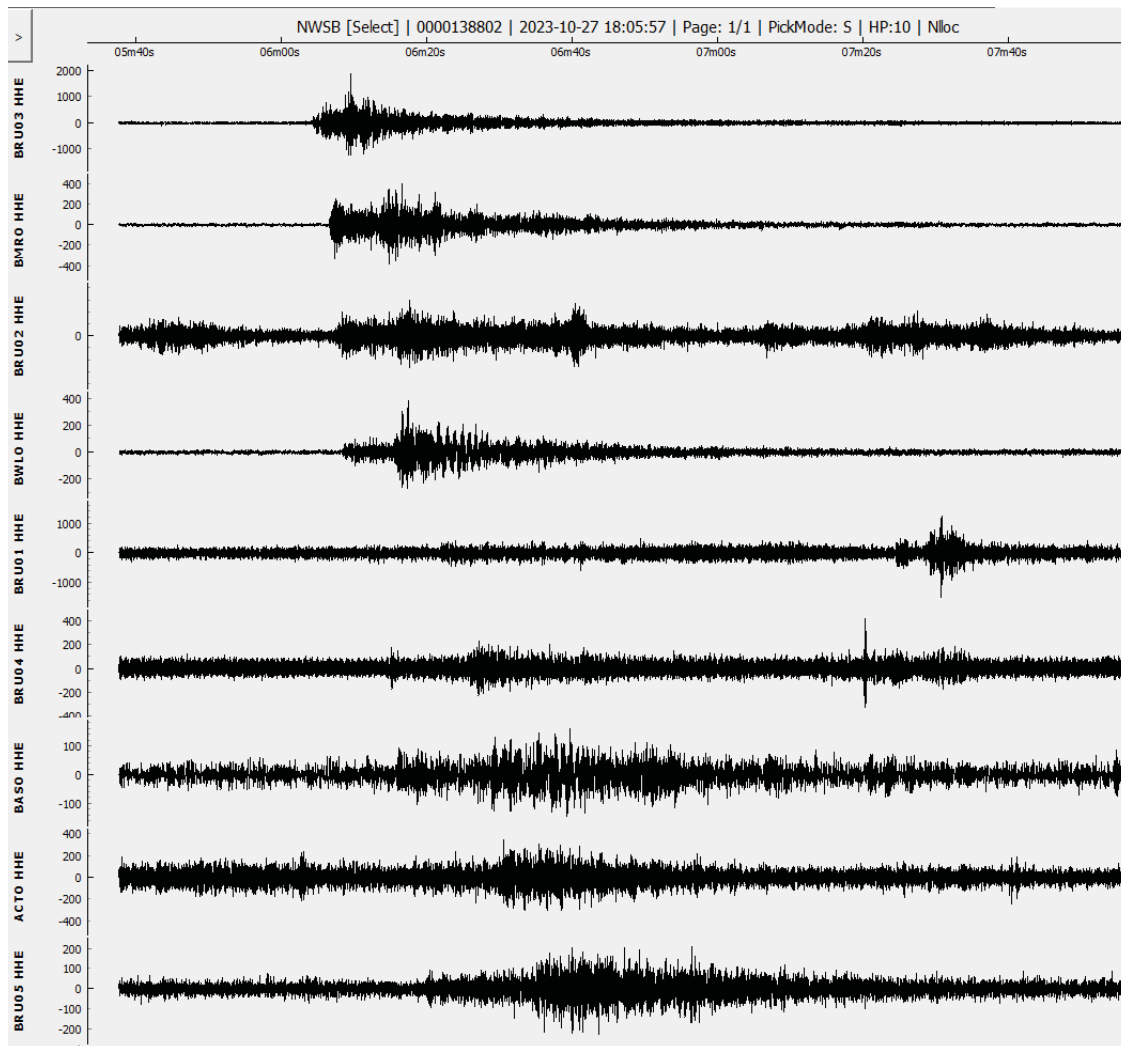
Date: 2023-07-11  
 Time: 16:32:54 UTC  
 Latitude: 44.5513°N  
 Longitude: 80.8660°W  
 Depth: 0.55 km  
 Magnitude: 1.54 MI  
 Tag: quarry\_blast



Date: 2023-08-31  
 Time: 16:08:54 UTC  
 Latitude: 44.5353°N  
 Longitude: 80.8772°W  
 Depth: 1.00 km  
 Magnitude: 1.49 MI



Date: 2023-10-27  
 Time: 18:05:57 UTC  
 Latitude: 44.5338°N  
 Longitude: 80.5713°W  
 Depth: 1.30 km  
 Magnitude: 1.53 MI  
 Tag: quarry\_blast



## Appendix C: CHIS Events (January 1 2023 - December 31 2023)

DateTime (UTC)	Lat	Long	Depth (km)	Mag	Description	Event Type
2023-12-08 18:15	43.3071	-80.0396	0	2.46	Blast, 5 km WNW of Dundas Mine, ON/Dynamitage, 5 km ONO de la mine Dundas, ON	Blast
2023-11-07 16:45	44.752	-79.422	0	1.97	Blast, 8 km NNW of Amigo Beach, ON/Dynamitage, 8 km NNO de Amigo Beach, ON	Blast
2023-10-17 16:03	44.5414	-79.0919	0	2.17	Blast, 13 km NNE of Beaverton, ON/Dynamitage, 13 km NNE de Beaverton, ON	Blast
2023-10-10 17:58	43.8873	-78.6835	0	1.88	Blast, 1 km ENE of Bowmanville Mine, ON/Dynamitage, 1 km ENE de la mine Bowmanville, ON	Blast
2023-08-24 14:36	45.0902	-79.5998	0	2.02	Blast, 19 km S of Rosseau, ON/Dynamitage, 19 km S de Rosseau, ON	Blast
2023-08-17 16:30	44.3923	-80.2501	0	2.16	Blast, 12 km S of Collingwood, ON/Dynamitage, 12 km S de Collingwood, ON	Blast
2023-07-13 20:16	45.7945	-79.2413	0	2	Blast, 1 km NE of Joly, ON/Dynamitage, 1 km NE de Joly, ON	Blast
2023-07-10 9:25	43.7315	-81.7225	0	1.18	Blast, 1 km S of Goderich Mine, ON/Dynamitage, 1 km S de la mine Goderich, ON	Blast

2023-06-15 16:12	44.8956	-81.1685	0	1.89	Blast, 12 km WSW of Neyaashiinigmiing, ON/Dynamitage, 12 km OSO de Neyaashiinigmiing, ON	Blast
2023-06-13 15:55	44.6286	-79.0801	0	1.96	Blast, 23 km NNE of Beaverton, ON/Dynamitage, 23 km NNE de Beaverton, ON	Blast
2023-06-01 17:21	44.5107	-79.1718	0	2.05	Blast, 9 km N of Beaverton, ON/Dynamitage, 9 km N de Beaverton, ON	Blast
2023-05-25 19:07	45.947	-83.7838	0	3.57	Blast, 23 km S of Hilton, ON/Dynamitage, 23 km S de Hilton, ON	Blast
2023-05-09 19:55	44.4936	-77.5325	0	2.09	Blast, 5 km WSW of Madoc, ON/Dynamitage, 5 km OSO de Madoc, ON	Blast
2023-05-04 16:50	44.5085	-79.1764	0	2.08	Blast, 9 km NNW of Beaverton, ON/Dynamitage, 9 km NNO de Beaverton, ON	Blast
2023-04-19 15:11	45.9038	-83.1663	0	2.23	Blast, 4 km E of Meldrum Bay Mine, ON/Dynamitage, 4 km E de la mine Meldrum Bay, ON	Blast
2023-03-30 17:37	45.8566	-77.3594	0	2.02	Blast, 8 km WSW of Petawawa, ON/Dynamitage, 8 km OSO de Petawawa, ON	Blast
2023-03-24 18:50	44.6402	-80.9874	0	1.59	Blast, 9 km NNW of Owen Sound, ON/Dynamitage, 9 km NNO de Owen Sound, ON	Blast
2023-03-22 19:41	45.3436	-79.9666	0	2.28	Blast, 6 km ESE of Parry Sound, ON, felt/Dynamitage, 6 km ESE de Parry Sound, ON, ressenti	Blast

2023-03-21 14:22	45.3148	-78.9604	0	1.84	Blast, 9 km NW of Algonquin Highlands, ON/Dynamitage, 9 km NO de Algonquin Highlands, ON	Blast
2023-03-14 17:39	44.5405	-79.1562	0	2.05	Blast, 12 km N of Beaverton, ON/Dynamitage, 12 km N de Beaverton, ON	Blast
2023-02-14 21:41	43.6251	-80.0151	0	2.09	Blast, 2 km ESE of Acton, ON/Dynamitage, 2 km ESE de Acton, ON	Blast
2023-01-06 17:01	43.1001	-80.9162	0	2.03	Blast, 1 km W of Woodstock Mine, ON/Dynamitage, 1 km O de la mine Woodstock, ON	Blast
2023-12-27 14:47	42.8816	-82.4751	5	2.51	2 km WSW of Corunna, ON, felt/2 km OSO de Corunna, ON, ressenti	Earthquake
2023-12-24 9:18	45.0107	-81.1694	5	1.4	7 km ENE of Lion's Head, ON/7 km ENE de Lion's Head, ON	Earthquake
2023-12-01 0:36	45.4356	-77.9844	5	1.59	7 km S of Madawaska, ON/7 km S de Madawaska, ON	Earthquake
2023-12-01 0:01	45.441	-77.9962	5	2	7 km S of Madawaska, ON/7 km S de Madawaska, ON	Earthquake
2023-11-30 7:25	44.8259	-79.0876	2	1.64	25 km ESE of Gravenhurst, ON/25 km ESE de Gravenhurst, ON	Earthquake
2023-11-29 15:59	45.6559	-77.5207	18	1.62	13 km NW of Killaloe, ON/13 km NO de Killaloe, ON	Earthquake

2023-11-26 8:31	45.4486	-77.9892	10.85	1.76	6 km S of Madawaska, ON/6 km S de Madawaska, ON	Earthquake
2023-11-22 10:04	44.5057	-79.2239	2	1.8	10 km NW of Beaverton, ON/10 km NO de Beaverton, ON	Earthquake
2023-11-03 7:45	45.8276	-77.726	18	1.07	30 km SW of Chalk River, ON/30 km SO de Chalk River, ON	Earthquake
2023-11-02 13:06	43.2337	-79.781	5	2.02	13 km N of Binbrook, ON/13 km N de Binbrook, ON	Earthquake
2023-10-27 0:59	42.5389	-78.2967	5	1.48	61 km SE of Buffalo, NY/61 km SE de Buffalo, NY	Earthquake
2023-10-19 11:19	42.9043	-82.4208	5	2.54	3 km NE of Corunna, ON/3 km NE de Corunna, ON	Earthquake
2023-10-16 8:30	44.9456	-79.1889	2	1.38	15 km SE of Bracebridge, ON/15 km SE de Bracebridge, ON	Earthquake
2023-10-16 8:15	44.9478	-79.1704	2	1.49	16 km SE of Bracebridge, ON/16 km SE de Bracebridge, ON	Earthquake
2023-10-15 7:20	44.4074	-77.4895	5	1.36	11 km S of Madoc, ON/11 km S de Madoc, ON	Earthquake
2023-10-08 16:14	45.8163	-77.8029	15.12	1.68	42 km WSW of Petawawa, ON/42 km OSO de Petawawa, ON	Earthquake



2023-10-03 1:26	44.6095	-79.3823	2	1.79	3 km E of Orillia, ON/3 km E de Orillia, ON	Earthquake
2023-10-02 9:51	43.5957	-78.5376	5	1.54	37 km SSE of Bowmanville, ON/37 km SSE de Bowmanville, ON	Earthquake
2023-09-09 8:54	43.3863	-78.3502	5	1.32	71 km NE of Buffalo, NY/71 km NE de Buffalo, NY	Earthquake
2023-08-29 0:29	45.9579	-77.3425	18	1.5	9 km NW of Petawawa, ON/9 km NO de Petawawa, ON	Earthquake
2023-08-25 9:09	43.2285	-77.6521	5	1.56	7 km NNW of Rochester, NY/7 km NNO de Rochester, NY	Earthquake
2023-08-24 17:40	43.5409	-77.4174	5	1.48	44 km NNE of Rochester, NY/44 km NNE de Rochester, NY	Earthquake
2023-08-20 7:32	45.9491	-77.3625	15.63	2.76	10 km NW of Petawawa, ON/10 km NO de Petawawa, ON	Earthquake
2023-08-16 1:21	42.9074	-78.6926	5	1.83	16 km ENE of Buffalo, NY/16 km ENE de Buffalo, NY	Earthquake
2023-07-23 8:25	45.6028	-81.3754	5	0.76	35 km SE of Wikwemikong, ON/35 km SE de Wikwemikong, ON	Earthquake
2023-07-15 10:07	44.5089	-78.9434	2	1.4	13 km NNE of Woodville, ON/13 km NNE de Woodville, ON	Earthquake

2023-07-08 11:15	43.2948	-78.3364	5	1.49	64 km NE of Buffalo, NY/64 km NE de Buffalo, NY	Earthquake
2023-06-28 5:43	44.6855	-79.4894	5	0.98	8 km W of Amigo Beach, ON/8 km O de Amigo Beach, ON	Earthquake
2023-06-22 16:49	44.9603	-80.8801	2	1.48	12 km ENE of Neyaashiinigmiing, ON/12 km ENE de Neyaashiinigmiing, ON	Earthquake
2023-06-21 17:27	44.4329	-78.2035	2	2.66	6 km E of Lakefield, ON, felt/6 km E de Lakefield, ON, ressenti	Earthquake
2023-06-15 11:40	44.5791	-79.4245	2	1.53	3 km S of Orillia, ON/3 km S de Orillia, ON	Earthquake
2023-06-11 4:06	45.7389	-79.8143	5	0.95	11 km N of Croft part B, ON/11 km N de Croft part B, ON	Earthquake
2023-06-10 10:42	44.8331	-78.9758	5	1.33	36 km SE of Bracebridge, ON/36 km SE de Bracebridge, ON	Earthquake
2023-05-23 20:39	42.5674	-78.9734	5	1.96	36 km SSW of Buffalo, NY/36 km SSO de Buffalo, NY	Earthquake
2023-05-23 16:26	45.1334	-80.277	5	1.21	21 km WNW of Moose Point, ON/21 km ONO de Moose Point, ON	Earthquake
2023-05-22 22:06	45.9146	-77.3074	21.62	1.8	4 km NW of Petawawa, ON/4 km NO de Petawawa, ON	Earthquake

2023-04-17 8:40	44.4895	-77.2957	5	1.64	3 km ENE of Tweed, ON/3 km ENE de Tweed, ON	Earthquake
2023-04-17 7:55	44.4948	-77.303	5	1.17	3 km NE of Tweed, ON/3 km NE de Tweed, ON	Earthquake
2023-04-09 8:23	43.3567	-78.3889	5	1.43	66 km NE of Buffalo, NY/66 km NE de Buffalo, NY	Earthquake
2023-04-08 7:37	44.6816	-77.9464	2	1.67	1 km NNE of Nephton Mine, ON/1 km NNE de la mine Nephton, ON	Earthquake
2023-04-03 16:43	44.8017	-79.0362	2	1.55	29 km ESE of Gravenhurst, ON/29 km ESE de Gravenhurst, ON	Earthquake
2023-03-30 21:54	44.9397	-78.9698	2	2.07	26 km SSE of Lake of Bays, ON/26 km SSE de Lake of Bays, ON	Earthquake
2023-03-30 21:54	44.939	-78.9718	2	1.57	26 km SSE of Lake of Bays, ON/26 km SSE de Lake of Bays, ON	Earthquake
2023-03-30 21:35	44.9432	-78.978	2	1.92	25 km SSE of Lake of Bays, ON/25 km SSE de Lake of Bays, ON	Earthquake
2023-03-15 8:30	42.8447	-78.816	5	1.78	7 km SE of Buffalo, NY/7 km SE de Buffalo, NY	Earthquake
2023-03-10 3:15	44.3789	-78.9516	2	1.42	4 km SE of Woodville, ON/4 km SE de Woodville, ON	Earthquake

2023-03-09 0:32	43.5022	-78.288	5	1.75	56 km SE of Bowmanville, ON/56 km SE de Bowmanville, ON	Earthquake
2023-03-05 5:50	45.7409	-77.2757	18	1.17	16 km SW of Pembroke, ON/16 km SO de Pembroke, ON	Earthquake
2023-02-27 23:37	44.981	-79.2085	2	1.79	11 km SE of Bracebridge, ON/11 km SE de Bracebridge, ON	Earthquake
2023-02-20 8:15	45.7965	-81.644	2	2.46	6 km E of Wikwemikong, ON/6 km E de Wikwemikong, ON	Earthquake
2023-02-17 3:25	44.9781	-79.2073	2	1.46	11 km SE of Bracebridge, ON/11 km SE de Bracebridge, ON	Earthquake
2023-02-14 3:12	44.9756	-79.225	2	2.41	10 km SE of Bracebridge, ON/10 km SE de Bracebridge, ON	Earthquake
2023-02-06 11:47	42.8645	-78.7918	5	2.27	7 km ESE of Buffalo, NY/7 km ESE de Buffalo, NY	Earthquake
2023-02-06 11:46	42.8831	-78.8057	5	2.42	6 km E of Buffalo, NY/6 km E de Buffalo, NY	Earthquake
2023-02-06 11:15	42.8611	-78.7797	5	4.3	8 km ESE of Buffalo, NY, felt/8 km ESE de Buffalo, NY, ressenti	Earthquake
2023-01-25 7:01	44.9334	-79.1824	8.84	1.61	16 km SE of Bracebridge, ON/16 km SE de Bracebridge, ON	Earthquake

2023-01-22 9:42	44.9433	-79.157	5	1.09	17 km SE of Bracebridge, ON/17 km SE de Bracebridge, ON	Earthquake
2023-01-18 1:44	44.6213	-78.3645	2	1.18	17 km ENE of Bobcaygeon, ON/17 km ENE de Bobcaygeon, ON	Earthquake
2023-01-14 21:41	45.9291	-77.378	10.57	1.82	9 km WNW of Petawawa, ON/9 km ONO de Petawawa, ON	Earthquake
2023-01-09 15:55	45.7637	-80.3314	13.35	1.43	10 km E of Magnetewan, ON/10 km E de Magnetewan, ON	Earthquake
2023-01-09 0:11	45.5817	-80.5226	5	0.76	12 km W of The Archipelago, ON/12 km O de The Archipelago, ON	Earthquake
2023-01-07 7:56	45.5286	-80.5257	5	1.14	14 km WSW of The Archipelago, ON/14 km OSO de The Archipelago, ON	Earthquake
2023-01-07 6:45	45.5316	-80.531	5	1.44	14 km WSW of The Archipelago, ON/14 km OSO de The Archipelago, ON	Earthquake
2023-01-07 0:57	45.522	-80.5338	5	1.53	15 km WSW of The Archipelago, ON/15 km OSO de The Archipelago, ON	Earthquake
2023-01-06 23:34	45.5507	-80.5281	5	0.69	13 km WSW of The Archipelago, ON/13 km OSO de The Archipelago, ON	Earthquake

